



Spirometer

IQmark™ Digital Spirometer

IQmark™ Digital Spirometer

Accurate and Precise

The IQmark Digital Spirometer was tested at LDS Hospital in Salt Lake City. Below is a summary table of the results compared to the spirometry recommendations of the ATS Standardization of Spirometry, 1994 Update.

Meets or exceeds these standards

ATS-American Thoracic Society, Standardization of Spirometry, 1994 Update.

OSHA-Occupational Safety & Health Administration

NIOSH-National Institute for Occupational Safety and Health

SSD-Social Security Disability

ERS-European Respiratory Society

ECCS-European Community for Coal & Steel

Specifications

Real-Time Graphics - Flow-Volume, Volume-Time

Reports - Full Size 8.5 x 11 inches, customizable and preprogrammed

Predicted Equations - Crapo (ITS/ATS), NHANES III (Hankinson), Knudson, Morris, Roca, ECCS, Hsu (Pediatric), Polgar (Pediatric), Zapletal (Pediatric)

Interpretation-NHANES III (NLHEP); ATS

Calibration - 3-Liter Syringe

Power - Two 1.5V AAA alkaline batteries (serial version) USB version operates without batteries

Dimensions - 7 x 2.25 x 1.5 inches

Weight - 10 oz.

Mouthpiece Resistance - 1.043 cmH₂O/L/sec @ 14L/sec flow

Minimum System Requirements

Microsoft® Windows®-based PC with Windows 2000 or XP

Intel® Pentium®-class microprocessor (500MHz or faster) or compatible

RAM 64MB for Windows 2000/XP

Hard disk with 200MB of free space or greater

CD-ROM Drive

VGA display 256 colors (16-bit color recommended) with resolution 800x600 (1024x768 recommended)

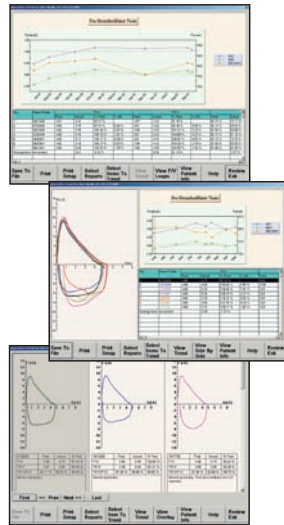
Microsoft-compatible mouse, keyboard and printer – color printer required for color-coded reports

One serial port (115KB per second) or a USB port

Disposables

Reorder Part # 2-100-1200
Box of 25 Disposable Pneumotach Mouthpieces

Trending

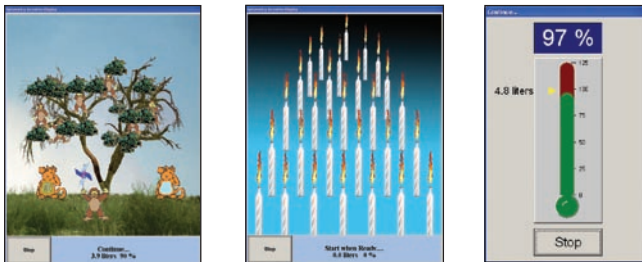


Parameter	ATS	IQmark
FVC Accuracy	3.0%	Less than 2%
FVC Precision	3.5%	Less than 2%
FEV ₁ Accuracy	3.0%	Less than 2%
FEV ₁ Precision	3.5%	Less than 2%
PEF Accuracy	10.0%	Less than 5%
PEF Precision	5.0%	Less than 2%

Weighing only 10 oz., the IQmark Digital Spirometer is a great addition to Midmark's digital diagnostic family. The IQmark Digital Spirometer meets or exceeds the strict requirements of the American Thoracic Society and is easy to use. It supplies you with all the measurements you require from a diagnostic Spirometer. This includes FEV₆ that is recommended by the NLHEP. The IQmark Digital Spirometer enables you to perform FVC, VC and MVV tests as well as printing full-page reports on standard 8 1/2 x 11" paper. Performing Pre- and Post-Bronchodilator tests is straightforward for both you and your patients. The Spirometer utilizes a Disposable Pneumotach Mouthpiece that minimizes the chance of patient cross-contamination, ensuring safe and convenient testing. Using the Spirometer's data with smoking-cessation programs increases the success rate of the participants. By entering the patient's smoking history into the IQmark Digital Spirometer, it will automatically report the patient's Lung Age and COPD Risk. You can use this information to show your patients the current physical condition of their lungs.

The IQmark Digital Spirometer offers improvements in efficiency and quality of care. With an EMR, our seamless integration solution allows you to perform a Spirometry test from within the EMR and instantly store the test result in the patient's electronic chart. This includes the interpretation, measurements, predicted values and graphs as digital data, not an image. There is no better way to move your Spirometry workflow into the digital age.

Incentives



Midmark Diagnostics Group is an ISO 13485 Certified Company.

Midmark Diagnostics Group
1125 W. 190th Street, Gardena, CA 90248
midmarkdiagnostics.com
1-800-624-8950

© 2006 Midmark Corporation
60 Vista Drive, P.O. Box 286, Versailles, OH 45380-0286
1-800-MIDMARK midmark.com
Products subject to improvement changes without notice
Litho in U.S.A. 007-0597-00 Rev. C1 (12/07)

For additional information, please visit:
www.midmarkdiagnostics.com

