

BRENTWOOD
by MIDMARK

*Every now and then
there is something that changes...*

...the way we think



...the way we work



...the way we diagnose



IQmarkTM
EZ Holter

Making Holter easy...

...the way we think

***It's never been easier...
The Brentwood IQmark EZ Holter.***

The advanced Brentwood IQmark EZ Holter is engineered to set a new standard for ease of use. All you do is enter the patient demographics, select auto report and start scanning. That's it! This three-channel, Windows-based system uses the latest in software technology, combined with the accuracy and versatility of the Brentwood Holter algorithm. Simple, intuitive screen layouts present important Holter analysis clearly. Big button menus consistent with the Brentwood Diagnostic Workstation makes managing your diagnostic tests simple. The IQmark EZ Holter is fully automated yet gives the operator options to define parameter thresholds to target specific analysis criteria. Cardiac occurrences exceeding preset limits are displayed for further review. The IQmark EZ Holter makes sophisticated analysis simple and cost-effective!

Use it with our IQmark Digital Recorder^{CF} for the ultimate in digital accuracy.

- **Automatic Classification of Events**
Automatic event classification by the Brentwood algorithm allows you to spend time with your patient discussing the analyzed data, instead of spending hours editing reports.
- **Page-Scan Functions**
Color-coded samples can be viewed in 8, 30, 60 or 120 seconds formats. Labeling and immediate printing of sample strips are also provided.
- **Simultaneous Channel Analysis**
Two or three channels of ECGs are correlated during the analysis to enhance the system's accuracy.
- **QRS Amplitude/ST-Level Calibration**
Automatic system calibration ensures and verifies sample points for PR baseline reference, and J-point and ST measurement points for each channel of ECG data. All channels are automatically analyzed.
- **Automatic 24-Hour Full Disclosure**
Print out in one, two or three channels of 24-hour continuous, original ECGs. Patient diary events and abnormal ST-level annotations are indicated.
- **Automatic ST-Segment Analysis**
ST measurements of all three channels over the entire scan are provided. ST level curves and ST slope curves for all channels.
- **Automatic Color-Coded Arrhythmia Editing**
Each detected VE, VE-pair, V-tach, SVE, SV-pair, SV-tach, R on T, bigeminy and trigeminy can be viewed for accuracy. The system will automatically accept, reject or change classified occurrences throughout the entire program to affect all further processing.
- **Automatic Artifact Rejection**
Sophisticated digital filtering techniques help eliminate errors due to noise for a more accurate report.
- **R-R Variability**
Presents R-R Interval/R-R Ratio in histograms.
- **On Line Help**
Find all your answers about EZ Holter instantly.

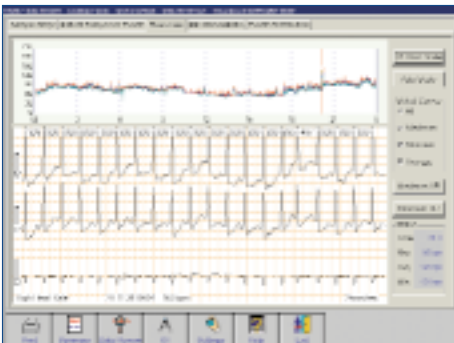
Brentwood...Accuracy and

*...the way
we work*



Simple, Intuitive, Easy to Use.

*Finally, a Holter solution developed with the user in mind,
while offering the utmost in patient care.*



...the way we diagnose

Seamless integration with the Brentwood Diagnostic Workstation

The IQmark Digital Holter 6.0 is the first version to be seamlessly integrated with the Brentwood Diagnostic Workstation.

The Brentwood Diagnostic Workstation is the portal to all Brentwood's medical utilities: ECG, Holter, Spirometry and Vital Signs.

You can use the Brentwood Diagnostic Workstation to easily manage and edit your patient's test data stored in the database.

Simply view and edit the data to create various reports that fit your practice and can assist you with your patient's diagnosis.

Integrated Brentwood Diagnostic Workstation components have the following features in common:

- Uniform user interfaces and operations
- Uniform reports management
- Portable and compatible report formats
- New Microsoft® component technology

versatility known worldwide

IQmark™ EZ Holter

IQmark™ Digital Holter Recorder^{CF}

IQmark EZ Holter Specifications

Data Acquisition 24-hour full disclosure

Analysis

- Isolated premature ventricular contractions (VE)
- Ventricular couplet (VE pair)
- Ventricular run (VE run)
- Ventricular bigeminy (Bigeminy)
- Ventricular trigeminy (Trigeminy)
- Total VE
- Longest/fastest/slowest VE runs
- Isolated premature atrial contractions (SVE)
- PAC pair (SVE pair)
- PAC run (SVE run)
- Total SVE
- Longest/fastest SVE runs
- Asystole (Pause)
- R on T
- ST level
- ST slope
- Tachycardia
- Bradycardia
- Average/minimum/maximum heart rate
- Heart rate variability

Minimum requirements for IQmark EZ Holter

- Desktop or laptop Microsoft Windows-based PC
- Pentium-based processor
- RAM
 - Windows 95/98—16MB
 - Windows Me/NT—32MB
 - Windows 2000/XP—64MB
- 500MB free hard-disk space
- Windows supported printer
- Microsoft-compatible mouse
- CD-ROM drive
- PCMCIA drive or USB port

IQmark Digital Holter Recorder^{CF} Specifications

- 24-hour full disclosure
- 3-channel data
- 8-bit resolution
- Removable compact flash memory
- Interface: Compact Flash Card Reader or Standard PCMCIA Card Reader with Compact Flash Adapter
- Compact flash card capacity: 48MB-96MB
- Sampling rate: 128 samples/sec.
- Input range: 5mV
- Analog bandwidth: 0.05 to 100Hz (3dB)
- Common mode rejection ratio: 60dB
- Dimensions: 4.46in. x 2.75in. x 1.02in.
(113mm x 70mm x 26mm)
- Weight: 4 oz. (113g)
- Uses two AA alkaline batteries
- Warranty: 12 months
- CE mark
- ETL listed



Because we care.

MIDMARK®

Midmark Corporation, Versailles, Ohio 45380 U.S.A.
800-MIDMARK (800-643-6275) · 937-526-3662

Technical Service: 800-624-8950 · 310-530-5955 · FAX 800-365-8631

www.brentwoodmed.com · www.midmark.com

©Midmark Corporation 2001 · Products subject to improvement changes without notice.
Litho in U.S.A. Industry code 0251 · 007-0294-00 · XI-MM1