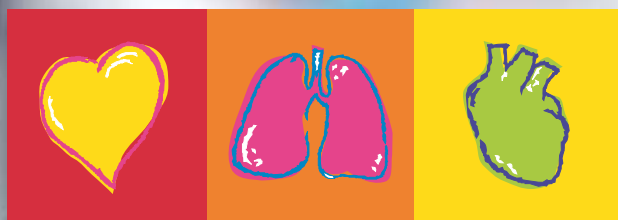


MAGLIFE C PLUS



The complete Magnetic
Resonance Monitoring concept



SCHILLER

www.schiller.ch

The Art of Diagnostics

Magnetic Resonance Monitoring without compromise!

Unique patented @SCS (Source Cleaned Signal) ECG with maximum Gradient Noise Suppression.

The unique @SCS ECG is a standard on all Maglife C Plus.

Maximum patient safety is achieved by a patented fiber optic ECG technology.

It offers in all circumstances a QRS cleaned at source from noise generated by gradient sequences of the MRI machine.

The optional Maglife C Plus Cardiac Gating module links the @SCS ECG signal by fiber optic direct to any MRI machine, providing:

- Precise ECG Triggering/Gating
- Shortest QRS Delay
- Easiest interfacing to all MRI Systems

Without @SCS



With @SCS



} T1 weighted SE with M.A.S.T.

Without @SCS



With @SCS



} T2 weighted FSE with Flow Compensation

A Master of MRI Compatibility

For over 10 years, SCHILLER – one of the world-wide leading manufacturers have produced MR compatible monitoring systems. The Maglife C Plus offers a complete MR compatible monitor plus a complete and safe solution for monitoring high risk patients undergoing MRI examination or MRI surgery. It is much more than just a simple adaptation or modification of a standard monitor. **All problems caused by emitted radio frequencies, magnetic and electro-magnetic fields are solved safely and**

reliably and the quality of MR images stays unimpaired.

The concept...

... is defined to fulfill all your needs and match your budget:

- **Maglife C Plus** MR monitor compatible with 0,2 Tesla to 3,0 Tesla imagers of all manufacturers
- **Magscreen**, remote control and display unit, placed outside the Faraday cage. The fiber optic link

with **Maglife C Plus** ensures safe, reliable and interference free data transmission.

- **ECG Gating**, for best Cardio-Vascular MR imaging
- **Magfile**, Software with special fiber optic interface and PC. Offers the facility to save all parameters monitored during the MRI examination. Printout provides a full anaesthetic report.
- **Magmove**, non-magnetic trolley



Customised conveniences:

Thanks to its numerous options, **Maglife C Plus** can be configured to your exact needs. From its basic configuration (ECG, SpO₂, NIBP), **Maglife C Plus** is entirely evolutionary. **Maglife C Plus** can be upgraded at any time with the following optional parameters/ features:

- EtCO₂ - N₂O - Respiration - FiO₂
- Anesthetic Agents (5)
- Temperature
- 2 Invasive Blood Pressure channels
- 2 Trace Recorder
- ECG Gating
- Magscreen
- Magfile
- Magmove

Wireless transmission:

Based on the latest **Bluetooth** technology. Optional wireless transmission between **Maglife C Plus** and the fiber optic link to Magscreen, allow **free moving** of the **Maglife C Plus** within the Faraday cage or when used with a **multiple installed base**.

Unlimited autonomy:

Maglife C Plus has an integrated **Mains Power supply**. An additional **built-in battery** guarantees uninterrupted functioning when **moving**.

Unique stray field analyser

Maglife C Plus has a unique built-in stray field analyser which continuously monitors the magnetic field, alarming when the set threshold is reached and activating the automatic safety shut-down when exceeded.

Exclusive temperature sensor

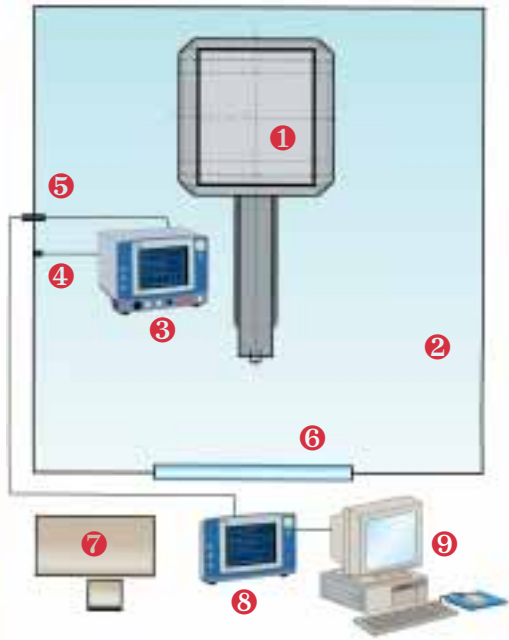
An optic interferometry device (type Fabry-Pérot) with fiber optic connection to your **Maglife C Plus**. This principle gives 100% safety for your patient, without any restriction for the placement of the sensor, even in the presence of high power MR sequences.

User friendly features

- Parameters are displayed on a large luminous backlit colour TFT screen for optimum visibility
- Easy to use software with drop-down menus, selected using the rotating button and a single click
- **Maglife C Plus** can be placed on an MR compatible anesthesia cart or non magnetic trolley, fixed on a shelf or a jointed arm



Typical MRI installation:



- 1 Magnet
- 2 Faraday cage
- 3 MAGLIFE C plus
- 4 Mains socket
- 5 RF wave guide for optical connection
- 6 Observation window
- 7 MRI operating console
- 8 MAGSCREEN remote display and control
- 9 MAGFILE optional PC and software

Technical information:

Weight: 32 kg (fully equipped)

Dimensions: 350 x 430 x 400 mm (h x w x d)

Mains: 100 / 115 / 230 Volts / 50 / 60 Hz

ECG signal:

Input:

- Acquisition by patented @SCS ECG fiber optic sensor

Heart rate range: 30 to 300 beats/min

Pulse/SpO₂:

Input: Fiber optic SpO₂ sensors

CO₂/N₂O:

Input: Aspiration tube

Measurement method: Spectrophotometry

Anesthetic agents:

Gas selection: Isoflurane, Halothane, Enflurane, Sevoflurane, Desflurane; inspired and expired values measured

FiO₂:

Measurement method: By galvanic cell

Non invasive blood pressure:

Measurement Method: Ozillometry
- up to 7 cuff sizes available

Invasive blood pressure:

2 channels available

Temperature:

Measurement method: Optical interferometry and fiber optic link
Range: 25-45° C

Technical changes are subject to change without notice

Asia
SCHILLER Asia-Pacific
10C, Jalan SS 3/33
Taman Universiti
Selangor, Malaysia
Phone: +603 78 77 5336
Fax: +603 78 77 5744
e-mail: schiller@top.net.my

Austria
SCHILLER Handelsgesellschaft mbH
Kampmüllerweg 24
A-4044 Linz
Phone: +43 732 70 99-0
Fax: +43 732 757 000
e-mail: sales@schiller.at

C. I. S.
ZAO SCHILLER RU
Pokrovsky Blvd., House 3
Block 1, Office 2202
P.O. Box 27
109028 Moscow, Russia
Phone: +70 95 956 29 10
Fax: +70 95 956 18 63
e-mail: service@schiller.ru

France
SCHILLER Médical S.A.
19, avenue de la Gare
F-67162 Wissembourg/Cedex
Phone: +33 3 88 63 36 00
Fax: +33 3 88 94 12 82
e-mail: info@schiller.fr

Germany
SCHILLER Medizintechnik GmbH
Hertzstrasse 26
D-76275 Ettlingen
Phone: +49 (0) 7243 21 77 0
Fax: +49 (0) 7243 21 77 10
e-mail: rescue@schillermed.de

India
SCHILLER Healthcare India Pvt. Ltd.
D.C. Silk Mills Compound, 'A' Wing, 1st floor
5, Chunawala Estate, Kondivitta Lane
Andheri-Kurla Road, Andheri (E)
Mumbai - 400 059, India
Phone: +91 22 826 35 20
Fax: +91 22 826 35 25
e-mail: schiller@vsnl.com

Spain
SCHILLER ESPAÑA, S.A.
Avenida Baviera, 12 - 14 Posterior
E-28028 Madrid
Phone: +34 91 713 01 76
Fax: +34 91 355 79 33
e-mail: schiller@schiller-es.com

Switzerland
SCHILLER-Reomed AG
Riedstrasse 14
CH-8953 Dietikon
Phone: +41 1 744 30 00
Fax: +41 1 740 37 10
e-mail: sales@schiller-reomed.ch

Turkey
SCHILLER Türkiye
Bayar Cadd. Paker Sitesi 97B
TR-81651 Kozyatagi-Istanbul
Phone: +90 216 372 3730
Fax: +90 216 463 7639
e-mail: dtctr@superonline.com

USA
SCHILLER America Inc.
11300 NW 41st Street
Miami, Florida 33178
Phone: +1 786 845 06 20
Fax: +1 786 845 06 02
e-mail: sales@schilleramerica.com

Your specialist:



SCHILLER

www.schiller.ch

The Art of Diagnostics