



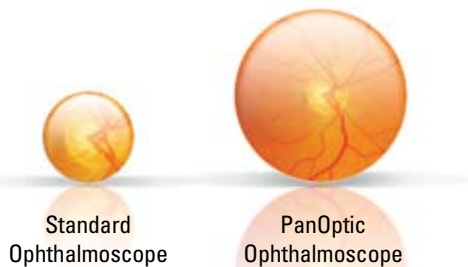
Welch Allyn PanOptic™ Ophthalmoscope

Innovative Optics for Panoramic Views of the Fundus

Developed and patented by Welch Allyn—creator of the world's first hand-held direct-illuminating ophthalmoscope—the PanOptic is a breakthrough concept in ophthalmology. Thanks to an innovative optical design known as Axial PointSource™ Optics, the PanOptic will greatly enhance your fundoscopic examinations.

Just look at all that PanOptic offers:

- Fast, easy entry into small, undilated pupils
- A 26% increase in magnification, making it easier to see retinal details
- 5X larger field of view than you see with standard ophthalmoscopes in an undilated eye
- Greater distance between practitioner and patient means greater comfort for all
- 25° field of view versus the 5° field of view of standard ophthalmoscopes
- Complete compatibility with existing Welch Allyn 3.5V power sources



5X LARGER FIELD OF VIEW
OF THE FUNDUS

WelchAllyn®

Advancing Frontline Care™

Revolutionary new technology for a difference you can see

■ **Patented Axial PointSource™ Optics:** This proprietary technology makes it easy to enter undilated pupils and provides a 25° field of view, resulting in a view of the fundus that's 5X greater than you see with a standard ophthalmoscope in an undilated eye.

■ **Halogen HPX™ Lamp:**
Provides whiter, brighter light.

■ **Glare Extinguishment System:**
Prevents interference from unwanted glare and reflections.

■ **Welch Allyn 3.5V Power Sources:**
Compatible with any standard 3.5V power source including: desk charger handles, convertible battery handles, wall transformers and the Lithium Ion Power Handle.



■ **Patient Eyecup:** The eyecup establishes and maintains proper viewing distance, provides image stability, serves as a pivoting point for panning around the retina, helps with orientation, and screens out ambient light. The eyecup is cleanable and reusable.

■ **PanOptic Soft Grip:** Ergonomically designed for maximum comfort, balance, and access to controls.

■ **Dynamic Focusing Wheel:**
Adjusts the focus in a continuous, smooth action for more precise control and optimum view. Available focusing range is -20 to +20 diopters.

■ **Aperture Dial:** Allows you to select micro, small, and large spot sizes. Also includes red-free filter and slit aperture. Optional half-moon aperture (11810 only) or cobalt blue filter with add-on magnifying lens (11820 only) for corneal exams.



71811-MP Desk Charger Set



76791-2MPX Integrated Diagnostic System

PanOptic Ordering Information:

11810	11820	
■	■	3 spot sizes: micro, small and large
■	■	Slit aperture
■	■	Red-free filter
■	■	Half-moon aperture (provides a combination of depth perception and field of view)
■	■	Cobalt blue filter with add-on magnifying lens for corneal examinations (surrogate for Woods Light)

PanOptic Specifications:

Dimensions: 5.12" L x 1.40" W x 3.75" H
without eyecup (with eyecup: 6.57" L)
Weight: .48 lbs without eyecup; .50 lbs with eyecup
Focusing Range: -20 to +20 diopters

Component Information:

11870 Reusable Patient Eyecups (package of 5)
03800-U Halogen HPX Lamp
11875 Corneal Viewing Lens (for use with 11820)
05258-M Diagnostic Set Carrying Case (hard)
05815-M Diagnostic Set Carrying Case (soft)

For more information on the Welch Allyn PanOptic Ophthalmoscope visit www.panoptic.welchallyn.com or call 1.800.535.6663 opt 3.



Advancing Frontline Care™