

ri-scope® L

**Riester**

The familiar way

NEW: with rheotronic®









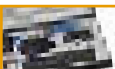
LED + Li-Ion  
*inside*

**ri-scope® L**

The new era of Light and Optics.

Instruments for E.N.T.  
Ophthalmology and Dermatology



	<b>Introduction to the ri-scope® L</b>	<b>03-04</b>
	<b>Instruments for E.N.T.</b>	<b>05-08</b>
	<b>Otoscopes</b>	<b>05</b>
	ri-scope® L Otoscope L1-L3	
	ri-scope® Operation otoscope	
	<b>Specula</b>	<b>06-07</b>
	ri-scope® L Otoscopes	
	ri-scope® O.P. Otoscope	
	<b>Tongue blade holder</b>	<b>07-08</b>
	ri-scope® F.O. tongue blade holder	
	Accessories	
	<i>Wooden tongue depressors</i>	
	<b>Nasal speculum</b>	<b>08</b>
	ri-scope® F.O. Nasal speculum	
	<b>Light conductor</b>	<b>08</b>
	ri-scope® F.O. Light conductor	
	Accessories	
	<i>Laryngeal mirrors</i>	
	<b>Ophthalmological Instruments</b>	<b>09-10</b>
	<b>Ophthalmoscopes</b>	<b>09</b>
	ri-scope® L Ophthalmoscope L1-L3	
	<b>Retinoscopes</b>	<b>10</b>
	ri-scope® retinoscope (skiascope)	
	<b>Dermatological Instruments</b>	<b>11-12</b>
	ri-derma® dermatoscopes	<b>11</b>
	<b>Dermatoscope</b>	<b>12</b>
	Accessories	
	<b>Lamps</b>	<b>13</b>
	HL 2.5-V Halogen lamps	<b>13</b>
	XL 3.5-V Xenon lamps	
	3.5-V LED lamps	
	<b>Power sources</b>	<b>14-17</b>
	<b>Handles</b>	<b>14-15</b>
	<b>Charging bases</b>	<b>15</b>
	<b>Diagnostic stations</b>	<b>16</b>
	<b>Extension modules</b>	<b>17</b>
	Accessories	
	<b>Sets</b>	<b>18-23</b>



# The best ri-scope® of all times

**Developing exact diagnostic instruments to the highest level is Riester's aim.**

The ri-scope® L opens a new era of high-performance and user-friendly diagnostic instruments. Li-ions/LED technology and new high-performance instruments significantly reduce costs while improving both effectiveness and reliability. Essentially improved optics and functions of the instrument.



## **LED illumination – Bright, white light with a nearly unlimited lifetime!**

With its monochromatic white light (reference color temperature = 5.500° Kelvin) the lamp in the ri-scope® L provides cold light and true-color, even illumination of the area under examination.

Lamps with LED technology have a lifetime of at least 10,000 hours (compared to 20-30 hours with halogen and Xenon lamps) and are extremely energy-efficient.

LED illumination is available with all Riester E.N.T. instruments and ri-derma® with lithium batteries or Li-ion batteries with alternative handles, Types C or AA.

## **Li-ion batteries – greatest power in the smallest space!**

Considerably higher charging capacity, longer lifetime, light-weight – these are the big advantages of the ri-scope® L with Li-ion and Li-batteries.

Li-ions batteries provide sustained high performance for up to 1200 charging cycles, with no memory effect and hardly any self-discharge. LEDs powered by lithium batteries can burn for up to 50 hours.

## **rheotronic® technology – Effective and safe light adjustment.**

Patented technology for LEDs and bulbs. 100% light output after short switch activation, continuously variable light adjustment and automatic safety shut-down.

## **ri-scope® L Otoscopes/ Ophthalmoscopes – New standards for eye and ear diagnostics!**

These completely new instruments were developed with input from doctors to set new standards for optical quality, ergonomics and performance options.

**LED + Li-Ion**  
*inside*



Otoscope with battery handle Type AA



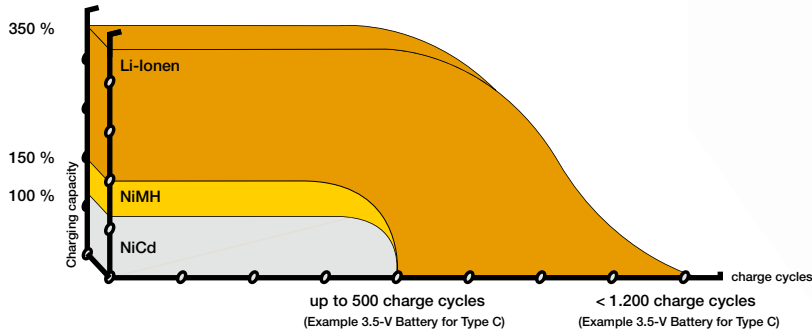
Ophthalmoscope with battery handle Type C

# ri-scope® L „Light and performance like never before“ The best ri-scope® of all times.



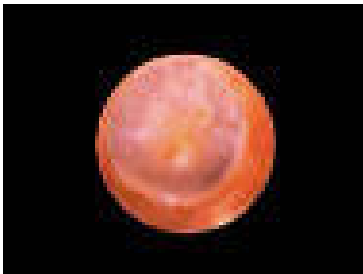
## Lithium-ion battery – The power plus.

Memory effect and self-discharge are no match: the light-weight lithium-ion battery used in the ri-scope® L has an unsurpassed lifetime – with higher loading capacity and sustained high-power performance, even after well over 1000 charge cycles.

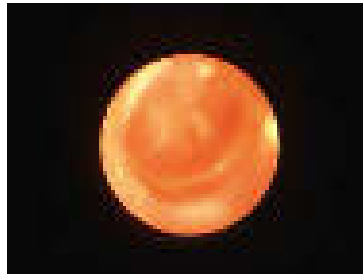


## LED technology – performance for life.

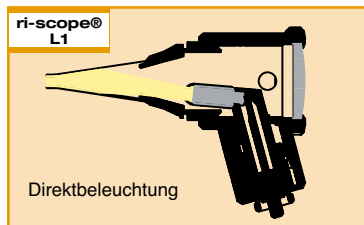
Nearly unlimited lifetime with the highest luminosity: these advantages make the LED technology used with the ri-scope® L so unique. Moreover, the lamp inside the ri-scope® L never gets hot, provides true-color, even illumination of the area under examination and is practically guaranteed never to fail, in contrast to conventional halogen or xenon lamps.



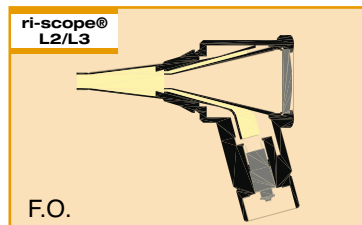
LED lighting: White light, equal to daylight and enabling a perfect diagnosis due to the strong contrast of the red tones.



Halogen lighting: More intense yellow light which, compared to the LED light with 5500 Kelvin color reference temperature, displays the red tones with significantly less contrast.



Reflection-reduced, cost-effective direct illumination with 2.5-V HL halogen or 3.5-V XL xenon lamps.



Fiber optics with 2.5-V HL halogen, 3.5-V XL xenon or 3.5-V LED illumination ensure an unhindered, glare-free view.



rheotronic® makes examinations easier than flipping a switch! Riester handles with the patented rheotronic® function switch on automatically to the touch and shut off after 120 seconds by themselves when put away. The light intensity can be adjusted with the rheotronic®.

## ri-scope® L Otoscopes

At Riester, we have made further improvements to our otoscopes: The newest generation ri-scope®L otoscopes **with optical glass and reduced reflection** combines excellent optical properties and unparalleled performance with the reliability and efficiency of LED/lithium-ion technology.

### ri-scope® L1

The inexpensive basic model with reduced-reflection, direct illumination (without specula ejection device)

- Direct illumination with 2.5-V halogen, or 3.5-V xenon lamp
- Bi-directional swivelling optical glass with 3-fold magnification, optional available with operation lens with 4-fold magnification
- Metal fitting for ri-mini®/pen-scope® specula, compatible with specula by other well-known manufacturers
- Suitable for pneumatic tests (supplied without ball)
- Available with optional C or AA handles (runs on commercial alkaline or NiMH batteries)

### ri-scope® L2

The inexpensive F.O. model with 2.5-V halogen, 3,5V xenon or 3.5-V LED lights (without specula ejection device)

- Fiberoptics for optimal beaming and transmission of the light
- Bi-directional swivelling, sealing optical glass with 3-fold magnification
- Optional operation lens with 4-fold magnification available
- Metal fitting for ri-mini/pen-scope® specula, compatible with specula by other well-known manufacturers
- Suitable for pneumatic tests (supplied without ball)
- Available with optional C or AA handles (runs on commercial alkaline or Li batteries or Li-ion batteries)

### ri-scope® L3

The unparalleled F.O. version with 2.5-V halogen, XL 3,5 xenon or 3.5-V LED illumination, Specula ejection device and operation magnifying lens

- Fiberoptics for optimal beaming and transmission of the light
- Bi-directional swivelling optical glass with 3-fold magnification
- Operation lens with 4-fold magnification and **glass mini optic** ease the insertion of instruments
- Easy-to-operate **SpecEjec®** specula ejection device
- Fitting for ri-scope® specula and enlarged conduit for instruments
- Suitable for pneumatic tests (supplied without ball)
- Available with optional C or AA handles (runs on commercial alkaline or Li batteries or Li-ion batteries)

## Operation otoscope



ri-scope® Operation otoscope

- HL 2.5-V halogen lamp, XL 3.5-V xenon lamp.
- Swivelling lens with 2.5-fold magnification.
- Movable speculum holder can be fixed in any position.
- Open design for unhindered use during examination and operation.
- Bayonet fitting for quick and secure attachment to the handle.
- OP otoscope made of metal and speculum holder made of impact-resistant plastic for long service life.
- Bulbs can be quickly replaced on the front of the otoscope.



without anti-theft device

**Nr. 10562** HL 2,5 V

**Nr. 10563** XL 3,5 V

with anti-theft device

**Nr. 10563-301** XL 3,5 V

without anti-theft device

**Nr. 10564** HL 2,5 V

**Nr. 10580** XL 3,5 V

**Nr. 10565** LED 3,5 V

with anti-theft device

**Nr. 10580-301** XL 3,5 V

**Nr. 10565-301** LED 3,5 V

without anti-theft device

**Nr. 10566** HL 2,5 V

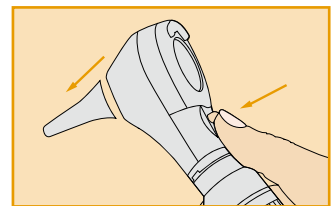
**Nr. 10581** XL 3,5 V

**Nr. 10567** LED 3,5 V

with anti-theft device

**Nr. 10581-301** XL 3,5 V

**Nr. 10567-301** LED 3,5 V



The SpecEjec® device enables touchless ejection of used ear specula for hygienic and simplified handling.

without anti-theft device

**Nr. 10560** HL 2,5 V

**Nr. 10561** XL 3,5 V

with anti-theft device

**Nr. 10561-301** XL 3,5 V

## Specula for ri-scope® L1/L2 otoscopes

### Reusable ear specula



- Selection of different sizes: 2 mm, 2,5 mm, 3 mm, 4 mm und 5 mm.
- Made of black plastic.
- Each speculum is labelled by size
- Sterilization at 134° C for 10 minutes in steam sterilizer or disinfection by conventional means possible.
- Delivered in a poly bag.

**2 mm, L1/L2**  
Nr. 10775 10 pcs.

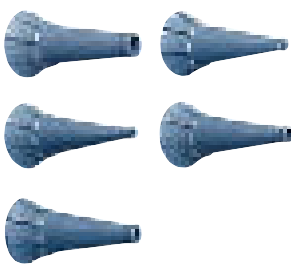
**2,5 mm, L1/L2**  
Nr. 10779 10 pcs.

**3 mm, L1/L2**  
Nr. 10783 10 pcs.

**4 mm, L1/L2**  
Nr. 10789 10 pcs.

**5 mm, L1/L2**  
Nr. 10795 10 pcs.

### Disposable specula



- For single use.
- An especially hygienic option for the prevention of cross-contamination
- Made of blue plastic.
- Delivered in a poly bag.

**2 mm, L1/L2**  
Nr. 10772-532 100 pcs.  
Nr. 10773-532 500 pcs.  
Nr. 10774-532 1000 pcs.

**2,5 mm, L1/L2**  
Nr. 10772-531 100 pcs.  
Nr. 10773-531 500 pcs.  
Nr. 10774-531 1000 pcs.

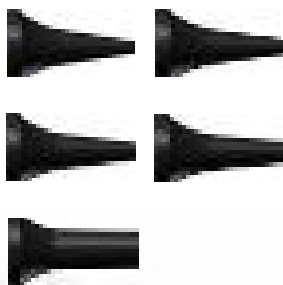
**3 mm, L1/L2**  
Nr. 10772-533 100 pcs.  
Nr. 10773-533 500 pcs.  
Nr. 10774-533 1000 pcs.

**4 mm, L1/L2**  
Nr. 10772-534 100 pcs.  
Nr. 10773-534 500 pcs.  
Nr. 10774-534 1000 pcs.

**5 mm, L1/L2**  
Nr. 10772-535 100 pcs.  
Nr. 10773-535 500 pcs.  
Nr. 10774-535 1000 pcs.

## Specula for ri-scope® L3 otoscope

### Reusable specula



- Specially developed for use with the **SpecEjec®** option, absolutely reliable handling.
- The 9-mm speculum is suitable for use as a nasal speculum.
- Selection of different sizes: 2 mm, 3 mm, 4 mm, 5 mm und 9 mm.
- Delivered in a poly bag.
- Each speculum is labelled by size.
- For repeat use.
- Sterilization at 134° C for 10 minutes in steam sterilizer or disinfection by conventional means possible.
- Made of black plastic.

**Ear specula, 2 mm, L3**  
Nr. 10800-532 10 pcs.

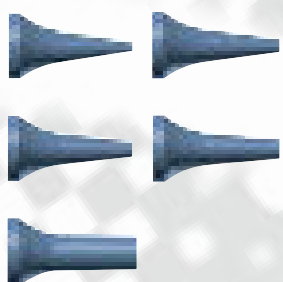
**3 mm, L3**  
Nr. 10800-533 10 pcs.

**4 mm, L3**  
Nr. 10800-534 10 pcs.

**5 mm, L3**  
Nr. 10800-535 10 pcs.

**Nasal specula, 9 mm, L3**  
Nr. 10800-539 10 pcs.

### Disposable specula



- For single use.
- An especially hygienic option for the prevention of cross-contamination
- Made of blue plastic.
- Delivered in a poly bag.

**2 mm, L3**  
Nr. 10801-532 100 pcs.  
Nr. 10802-532 500 pcs.  
Nr. 10803-532 1000 pcs.

**3 mm, L3**  
Nr. 10801-533 100 pcs.  
Nr. 10802-533 500 pcs.  
Nr. 10803-533 1000 pcs.

**4 mm, L3**  
Nr. 10801-534 100 pcs.  
Nr. 10802-534 500 pcs.  
Nr. 10803-534 1000 pcs.

**5 mm, L3**  
Nr. 10801-535 100 pcs.  
Nr. 10802-535 500 pcs.  
Nr. 10803-535 1000 pcs.

**9 mm, L3**  
Nr. 10801-539 100 pcs.  
Nr. 10802-539 500 pcs.  
Nr. 10803-539 1000 pcs.

## Specula for ri-scope® O.P. otoscope

### Reusable specula



- Stable and durable plastic specula with metal attachment for repeat use.
- Can be sterilized at 134° C for 10 minutes in steam sterilizer.
- Selection of different sizes: 2 mm, 3 mm, 4 mm, 5 mm und 9 mm.
- The 9-mm speculum is suitable for use as a nasal speculum.
- Each speculum is labelled by size.
- Delivered in a poly bag.

**Ear specula, 2 mm**  
Nr. 10460 1 pc.

**3 mm**  
Nr. 10461 1 pc.

**4 mm**  
Nr. 10462 1 pc.

**5 mm**  
Nr. 10463 1 pc.

**Nasal specula, 9 mm**  
Nr. 10464 1 pc.

## Accessories



### Operation lens for ri-scope® L otoscope

- Optical glass and small in diameter for insertion of instruments
- 4-fold magnification.
- With pin connector.

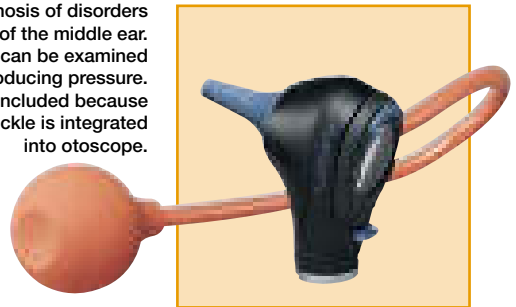
Nr. 11449

Ball for the pneumatic test  
for all Riester otoscopes



Nr. 10960

For the diagnosis of disorders  
of the middle ear.  
The ear drum can be examined  
optimally by producing pressure.  
No connector included because  
side-release buckle is integrated  
into otoscope.



### ri-scope® F.O. tongue blade holder

- With 3.5V LED, XL 3,5V xenon- or HL 2.5V halogen lamp.
- High-quality fiberoptic lightwave conductor for optimal beaming and transmission of the light. In combination with the lamp this provides cool examination light similar to daylight.
- Slide attachment for fixing and detaching wooden tongue depressors for a firm hold.
- Bayonet fitting for quick and secure attachment to the handle.
- Sturdy, very light casing made of ABS plastic for a long service life.
- Bulbs can be quickly replaced at the base of the instrument head.

without anti-theft device

**Nr. 10534** HL 2,5 V  
**Nr. 10535** XL 3,5 V  
**Nr. 10574** LED 3,5 V

with anti-theft device

**Nr. 10535-301** XL 3,5 V  
**Nr. 10574-301** LED 3,5 V



**LED + Li-Ion**  
*inside*



### Wooden tongue depressors

- 100 disposable wooden tongue depressors in practical dispenser.
- Smooth and splinter-free depressors with rounded edges, made of high-quality, light birch wood.
- Depressor dimensions: 150 x 18 x 1.7 mm.
- Non-sterile, heated to 70° C.

Nr. 12530

Minimum order:  
100 packages  
(10.000 depressors)

### Nasal speculum



LED + Li-Ion  
*inside*

### ri-scope® F.O. nasal speculum

- With 3.5-V LED, XL 3,5-V xenon- or HL 2.5-V halogen lamp.
- High-quality fiberoptic lightwave conductor for optimal beaming and transmission of the light. In combination with the lamp this provides cool examination light similar to daylight.
- Swivelling and removable lens with 2.5-fold magnification.
- Slow and controlled expansion of the speculum by turning on the screw adjuster, fast expansion by pressing down on the screw adjuster.
- Bayonet fitting for quick and secure attachment to the handle.
- Impact resistant casing made of glass-fiber reinforced plastic.
- Bulbs can be quickly replaced at the base of the instrument head.

without anti-theft device

<b>Nr. 10536</b>	HL 2,5 V
<b>Nr. 10537</b>	XL 3,5 V
<b>Nr. 10575</b>	LED 3,5 V
with anti-theft device	
<b>Nr. 10537-301</b>	XL 3,5 V
<b>Nr. 10575-301</b>	LED 3,5 V

### Light conductor



LED + Li-Ion  
*inside*

### ri-scope® F.O. light conductor

- With 3.5-V LED or HL 2.5-V halogen lamp.
- High-quality fiberoptic lightwave conductor for optimal beaming and transmission of the light. Best illumination of throat and laryngeal areas.
- Bayonet fitting for quick and secure attachment to the handle.
- Chrome-plated metal, durable and sturdy.
- Bulbs can be quickly replaced at the base of the instrument head.

without anti-theft device

<b>Nr. 10538</b>	HL 2,5 V
<b>Nr. 10539</b>	XL 3,5 V
<b>Nr. 10576</b>	LED 3,5 V
with anti-theft device	
<b>Nr. 10539-301</b>	XL 3,5 V
<b>Nr. 10576-301</b>	LED 3,5 V

### Accessories



### Laryngeal mirrors

for ri-scope® F.O. light conductor

- Two laryngeal mirrors No. 3 (Ø 20 mm) and No. 4 (Ø 22 mm) for illumination and mirroring of laryngeal area.
- Easily attached to the light conductor.

Nr. 10447

1 pair

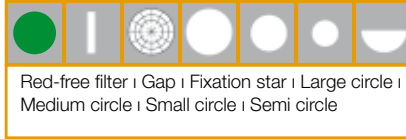


## ri-scope® L ophthalmoscopes

All ri-scope® L ophthalmoscopes with modular design impress with their high-performance optics with aspherical condenser lens with reduced-reflection view even with small pupils and through improved ergonomics. The new ri-scope® L ophthalmoscopes have a thumbrest for securing the ophthalmoscope, which enables easy control of all the elements with one finger.

### ri-scope® L1

#### Apertures L1



The inexpensive basic model with all the important basic functions

- Diopter wheel with 29 corrective lenses  
Plus 1-10, 12, 15, 20, 40  
Minus 1-10, 15, 20, 25, 30, 35
- Easy-to-operate aperture hand-wheel with semi-circle, small/medium/large circle fixation star, slit and red-free filter with contrast-enhancing effect
- Optimized high-performance optics with aspherical condenser lens
- Parallel beam path
- Dust-proof

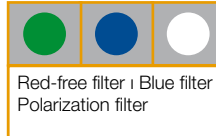
without anti-theft device  
**Nr. 10569** XL 3,5 V  
with anti-theft device  
**Nr. 10569-301** XL 3,5 V

### ri-scope® L2

#### Apertures L2



#### Filters



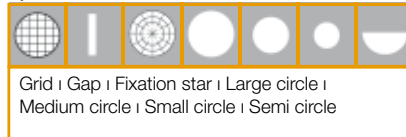
The enhanced basic model with separately engageable red-free, blue and polarization filters for each aperture.

- Diopter wheel with 29 corrective lenses  
Plus 1-10, 12, 15, 20, 40  
Minus 1-10, 15, 20, 25, 30, 35
- Easy-to-operate aperture hand-wheel with semi-circle, small/medium/large circle, fixation star, and slit
- Includes filter wheel engageable for all apertures with symbol display, red-free filter, blue filter and polarization filter
- Optimized high-performance optics with aspherical condenser lens
- Parallel beam path
- Dust-proof

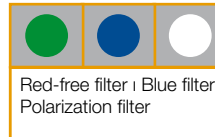
without anti-theft device  
**Nr. 10570** HL 2,5 V  
**Nr. 10571** XL 3,5 V  
with anti-theft device  
**Nr. 10571-301** XL 3,5 V

### ri-scope® L3

#### Apertures L3



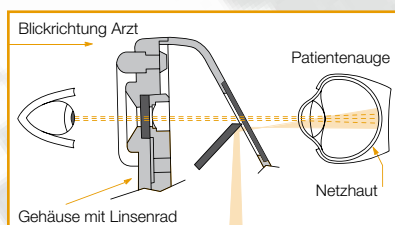
#### Filters



The maximized model with additional focussing device and 89 single-step diopter values.

- Corrective lenses for 89 diopter values  
Plus 1-45 in single steps  
Minus 1-44 in single steps
- Easy-to-operate aperture hand-wheel with semi-circle, small/medium/large circle, fixation star, slit and grid
- Includes filter wheel engageable for all apertures with symbol display, red-free filter, blue filter and polarization filter
- Focussing device with zero retention force for the quick correction of ametropias.
- Dust-proof

without anti-theft device  
**Nr. 10572** HL 2,5 V  
**Nr. 10573** XL 3,5 V  
with anti-theft device  
**Nr. 10573-301** XL 3,5 V

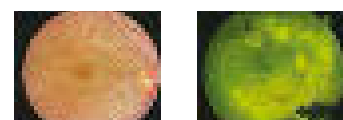


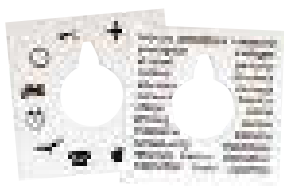
Reflexes from the cornea and iris are avoided by separating the observational and illuminating light beams (Gullstrand's principle). The illuminated retinal area is completely visible – even in cases of contracted pupils - creating optimal conditions for ophthalmological examinations.

#### Corrective lenses L1/L2

D+	1	2	3	4	5	6	7	8	9	10	12	15	20	40	
D-	1	2	3	4	5	6	7	8	9	10	15	20	25	30	35

Corrective lenses from +40 through -35 diopters guarantee a sharp picture, even in cases of especially severe refraction





**ri-scope® retinoscope (skiascope)**

- The ri-scope® retinoscope (skiascope) measures the refractive power of the eye. Refractive flaws, such as near- and far-sightedness, as well as astigmatism can be detected and diagnosed.
- With XL 3.5-V xenon lamp or HL 2.5-V halogen lamp.
- Two models are available:
  - The spot-light retinoscope projects a circular light beam.
  - The slit-light retinoscope with a light beam in the form of a line, simplifies detection and diagnosis of astigmatic refractive flaws. The reflex in the form of a line is moved vertically to the axis across the pupils of the patient with a slight oscillating movement. A shadow moves in the same or opposite direction. Co-movement (plus lines): The patient is far-sighted. Counter-movement (minus lines): The patient is near-sighted.
- Easy to operate with knurled thumb screw. The line and spot image can be focused with the controls and turned 360°, angle read-out displayed on the integrated scale.
- Holder for hanging and placement of the fixation card into position for dynamic retinoscopy.
- Delivered with two fixation cards. The patient's eye can adjust optimally to the distance to the retinoscope.
- Integrated eyeglass protection.
- Bayonet fitting for quick and secure attachment to the handle.
- Dust-proof, very sturdy and light casing made of impact-resistant ABS plastic.
- Bulbs can be quickly replaced at the base of the instrument head.

**Slit**

without anti-theft device

**Nr. 10543** HL 2,5 V

**Nr. 10544** XL 3,5 V

with anti-theft device

**Nr. 10544-301** XL 3,5 V

**Spot**

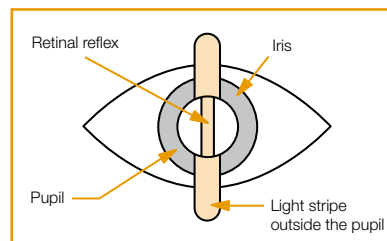
without anti-theft device

**Nr. 10545** HL 2,5 V

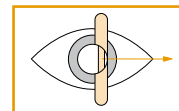
**Nr. 10546** XL 3,5 V

with anti-theft device

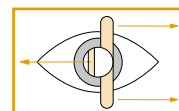
**Nr. 10546-301** XL 3,5 V



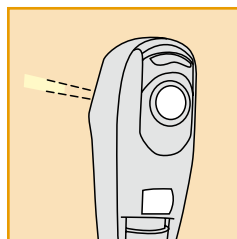
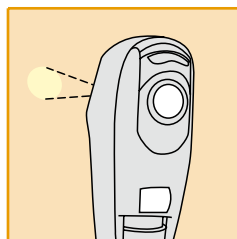
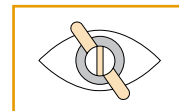
**Co-movement  
Far-sightedness**



**Counter-movement  
Near-sightedness**



**Line outside  
the axis  
Astigmatism**



The ri-scope® retinoscope (skiascope) is available with circular light beam or light beam in the form of a line.



The slit and spot image can be turned 360° with the knurled thumb screw. The respective angle read-out is displayed directly on the scale.

The fixation cards may be placed on the holder and be attached.

## ri-derma® dermatoscopes

Today skin cancer is a commonly occurring disease, which can often be diagnosed and treated at an early stage. The ri-derma® dermatoscope offers physicians and specialists a reliable method of dermatoscopic screening and early identification of malignant melanomas. Proven epiluminescence microscopy allows melanocytic and non-melanocytic structures to be distinguished and enables precise observation of changes in skin pigmentation.

- Illumination of the examination field with 3.5-V LED illumination and/or 2.5-V HL halogen illumination resembles natural daylight.
- 10-fold magnification of the structure of the skin with focussing, achromatic lens.
- Two different skin-friendly and sterilizable contact plates are available:
  - with scale from 0 – 10 mm for exact measurement of pigmented skin lesions,
  - without scale.
- Bulbs can be quickly replaced at the base of the instrument head.
- Stable casing of black chrome-plated metal, dust-proof.
- Practical eyeglass protection.
- Bayonet fitting for quick and secure attachment of the instrument head to the handle.
- Large selection of power sources:
  - handy and stable handles,
  - practical chargers and
  - well-conceived diagnostic stations.
- Large selection of ri-derma® sets at especially attractive prices.
- All of the power sources can be combined with the high-quality Riester ri-scope® line.
- Developed and manufactured in Germany.



**LED + Li-Ion**  
*inside*



The bulb can be quickly replaced at the base of the instrument head.



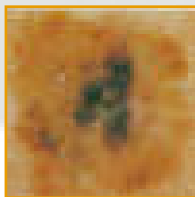
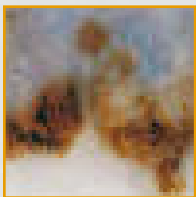
Focussing device with eyeglass protection.



Bayonet fitting for securely fastening ri-derma® to the handle.



Detailed brochure with useful information on epiluminescence microscopy available upon request. Many dermatoscopic findings are shown and explained.



ri-derma® allows for better assessment of the skin surface structure, color and pigmentation, making it easier to distinguish between melanocytic and non-melanocytic skin changes.



**ri-derma® dermatoscope**

- With 3.5-V LED or HL 2.5-V halogen lamp.
- 10-fold magnification of the skin structure with focussing, achromatic lens.
- Stable and dust-proof casing made of black chrome-plated metal.
- Practical eyeglass protection.
- Bayonet fitting for quick and secure attachment of the instrument head to the handle.
- Contact plate with scale included.
- **For ri-derma® sets, please see page 23.**

without anti-theft device

**Nr. 10577**

**LED 3,5 V**

**Nr. 10550**

**HL 2,5 V**

with anti-theft device

**Nr. 10577-301**

**LED 3,5 V**

**Accessories**



without scaling



with scaling  
0 – 10 mm

**Contact plates for ri-derma®**

- Non-reflecting and highly transparent contact plate made of stable, scratch-resistant material.
- Especially flat protective ring against cold made of plastic for optimal adaptation to the skin.
- Disinfectable materials for hygienic use.

**Nr. 10968**

without scaling

**Nr. 10969**

with scaling



Refined scaling down to 0.5 mm allows for exact measurement of pigmented skin lesions.



**Dermatoscopic oil**

Four 12.5 ml glass vials

**Nr. 10970**

- Upper skin layers become transparent, the skin surface becomes smooth.
- Oil rids the skin almost completely of reflection.
- Better assessment of surface structure, color, pigmentation and melanocytic or non-melanocytic structures.
- In a box.



Riester dermatoscopic oil makes the upper skin layers transparent, making it easier to assess changes in the skin.



## Lamps

Riester LED, XL xenon and HL halogen lamps shine more light on the diagnosis. They always ensure optimal illumination of the area under examination. The latest technology provides illumination that is similar to daylight.

### HL 2.5V halogen lamp



#### HL 2,5 V Halogenlampe

Für ri-scope® Otoskop L1

Nr. 10590



#### HL 2.5-V halogen lamp

For ri-scope® F.O. otoscope L2/L3, Light conductor, nasal speculum and tongue blade holder. Pack contains 6 units

Nr. 10600



#### HL 2.5-V halogen lamp

For ri-scope® operation otoscope  
Pack contains 6 units

Nr. 10602



#### HL 2.5-V halogen lamp

For ri-scope® ophthalmoscope and ri-derma®  
Pack contains 6 units

Nr. 10605



#### HL 2.5-V halogen lamp

For ri-scope® retinoscope slit lamp  
Pack contains 6 units

Nr. 10615



#### HL 2.5-V halogen lamp

For ri-scope® retinoscope spot-light  
Pack contains 6 units

Nr. 10620

### XL 3.5V xenon lamps/ 3.5V LED



#### LED 3,5 V

For ri-scope® F.O. otoscope L2/L3, ri-derma®, Light conductor, nasal speculum and tongue blade holder. Pack contains 6 units

Nr. 10599



#### XL 3.5-V xenon lamp

For ri-scope® Otoscope L1

Nr. 10592



#### XL 3.5-V xenon lamp

For ri-scope® Otoscope L2, L3

Nr. 10607



#### XL 3.5-V xenon lamp

For ri-scope® ophthalmoscope, ri-derma®  
Pack contains 6 units

Nr. 10608



#### XL 3.5-V xenon lamp

For ri-scope® operation otoscope  
Pack contains 6 units

Nr. 10609



#### XL 3.5-V xenon lamp

For ri-scope® retinoscope slit lamp  
Pack contains 6 units

Nr. 10610



#### XL 3.5-V xenon lamp

For ri-scope® retinoscope spot-light  
Pack contains 6 units

Nr. 10611

\*All lamps are shown in the original size

## Power sources

The Riester ri-scope® line includes a large selection of high-quality and long-lasting power sources, from handy and stable handles to the innovative charging device and to the practical diagnostic station. The 230-V or 120-V instruments shown here are standard versions. If you require other voltages or specialized plugs for your country, we request that you make this information available to us when inquiring or ordering.

## Handles

Handy Riester handles with continuously adjustable rheotronic® for regulating light intensity are the basis for a safe examination. The well-conceived ergonomically plug and battery handles guarantee comfortable handling.

- Solid metal handles, black chrome-plated.
- Practical bayonet fitting for quickly switching instrument heads.
- Batteries are easy to replace at the base of the handle.
- For 3.5-V and 2.5-V ri-scope® and ri-derma® instrument heads.



### rheotronic®

- Patented technology for LEDs and bulbs.
- Activation by briefly tapping the rotating button to +, immediate 100 % light output
- Continuously variable adjustment by briefly tapping to + or -
- Deactivation by longer tapping to -
- Diode signals whether handle is on or off
- Automatic safety shutdown after 120s



### Battery handles Type C without batteries

- Handle diameter: 28 mm.
- Easy to charge in the ri-charger® charging base.
- With rheotronic®.

rheotronic® for alkaline battery,  
Li-ion battery and NiMH battery  
**Nr. 10670**

rheotronic® for Li batteries  
**Nr. 10630**

Alkaline battery Type C (2 pieces)



**Nr. 10686**

2,5 V

Li battery (2 pieces)



**Nr. 11287**

3,5 V

NiMH Battery ri-accu®



**Nr. 10681**

2,5 V

Li-ion battery ri-accu® L



**Nr. 10691**

3,5 V



### Plug handles

For ri-accu® and ri-accu® L rechargeable battery

- Handle diameter: 28 mm.
- Easy to charge by plugging it in.
- With rheotronic®.

with rheotronic®

**Nr. 10638**

3,5+2,5 V/230 V

**Nr. 10639**

3,5+2,5 V/230 V

Li-ion battery ri-accu® L



**Nr. 10692**

3,5 V



The Combi-handle combines three functions! It is always ready for use – even when electricity is not permanently available from the socket!

### Combi-handles

with rechargeable NiMH Battery ri-accu® for plug-in handle casing

- plug-in handle casing for one rechargeable NiMH battery ri-accu® (No. 10683, 2.5 V), alternative handle casing for a rechargeable NiMH battery ri-accu® (No. 10681, 2.5 V) or for two Type C batteries.
- By simply switching the plug-in casing with the alternative handle casing the plug-in handle converts to a battery handle – quickly and cost-effectively. There is no need to place an adapter in between!
- Handle diameter: 28 mm.
- Easy to recharge in ri-charger® charging base or by plugging it into the socket.
- The combi-handle can not be combined with parts for Type C battery handles or plug-in handles.




with rheotronic®

**Nr. 10666**  
**Nr. 10667**

2,5 V/230 V  
2,5 V/120 V



Thanks to the screw thread the Combi-handle can be converted quite simply from a plug-in into a battery handle. There is no need to place an adapter in between!

NiMH Battery ri-accu® for plug handles 	<b>Nr. 10683</b>	2,5 V
NiMH Battery ri-accu® for battery handles Type C 	<b>Nr. 10681</b>	2,5 V
Alkaline Battery Type C (2 pcs.) 	<b>Nr. 10686</b>	2,5 V



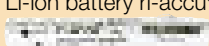


### Battery handle Type AA

With rheotronic® without batteries

for Alkaline batteries Type AA and Li-ion batteries  
**Nr. 10642**

for Li batteries  
**Nr. 10643**

Alkaline batteries Type AA (each handle requires 2) 	<b>Nr. 10685</b>	<b>2,5 V</b>
Li battery (2 pcs.) 	<b>Nr. 11287</b>	3,5 V
Li-ion battery ri-accu® L 	<b>Nr. 10690</b>	3,5 V

### Charging bases

ri-charger® is the perfect charging base for all rechargeable battery handles, Type C/AA.

- Table or wall model.
- Practical storage container for two replacement lamps and ear specula.
- Charging status displayed on the device:  
Yellow: charging in progress.  
Green: charging completed.



ri-charger® complete, with wall holder  
• For all 2.5-V and 3.5-V rechargeable handles with NiMH- or NiCd rechargeable batteries, 120 V + 230 V

**Nr. 10700** 230 V  
**Nr. 10701** 120 V



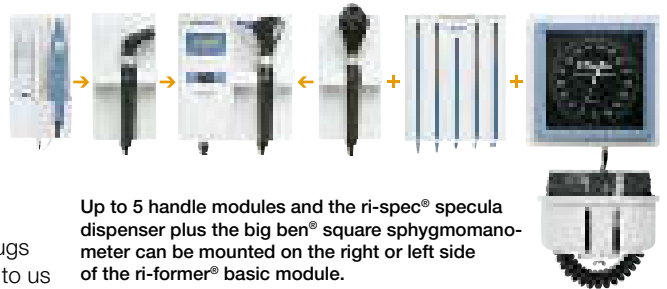
ri-charger® L complete, with wall holder  
• For all rechargeable handles with Li-ion batteries, 120 V + 230 V

**Nr. 10705** 230 V  
**Nr. 10706** 120 V

## Diagnosestationen

ri-former® – **the modular diagnostic station** by Riester – optimal flexibility for hospitals and medical practices. The diagnostic station modules can be combined individually to suit the requirements and location. Thanks to its innovative design it is variably extendable to the right and the left. The basic ri-former® module is available with one handle and can be supplemented with up to 4 more handle modules. The advantages of the ri-former® system can be seen in its versatile combination of options. With its centralized electrical power supply, the ri-former® offers the reliability required for the hectic day-to-day atmosphere of hospitals and medical practices. This guarantees cost savings and eliminates the need for batteries and rechargeable batteries, which is good for the environment.

- Also available with only one handle and extendable to a maximum of 5 handles – a maximum of 3 handles can be removed simultaneously.
- Available **with or without** optional digital clock. The time of day is easy to read both day and night thanks to the illuminated display. The clock is connected to the power circuit and **needs no batteries – no staff costs involved in changing the batteries.**
- **3.5-V LED or xenon illumination** create lighting conditions similar to daylight.
- The regulating switch enables optimal electronic efficiency.
- **Constant output voltage** independent of the power supply prolongs the service life of the lamps and guarantees optimal light intensity.
- **The handles automatically switch on or off** when removing or replacing them in the handle unit.
- Non-slip, ergonomically designed handles **with rheotronic®**: the handle enables continuously adjustable brightness as well as manual switching on and off.
- Spiral cord **stretches up to 3 m.**
- **Color-coordinated to match other Riester products.**
- **Easy cleaning and disinfection of the instruments.**
- **Instrument heads available with and without anti-theft device.**
- **All ri-scope® instrument heads can be combined with the ri-former® wall diagnosis station.** For detailed descriptions, please see pages 5 through 12.
- If you need other voltages (besides 120 V or 230 V) or specialized plugs for your country, we request that you make this information available to us upon ordering.
- **Developed and manufactured in Germany.**



Up to 5 handle modules and the ri-spec® specula dispenser plus the big ben® square sphygmomanometer can be mounted on the right or left side of the ri-former® basic module.



### ri-former® diagnostic station 1 handle

- without instrument heads.
- Complete with all mounting plate, plugs, screws, and instructions for assembly.

with clock

**Nr. 3650** 3,5 V/230 V

**Nr. 3651** 3,5 V/120 V

without clock

**Nr. 3652** 3,5 V/230 V

**Nr. 3653** 3,5 V/120 V



### ri-former® diagnostic station 2 handles

- Without instrument heads.
- Complete with all mounting plate, plugs, screws, and instructions for assembly.

with clock

**Nr. 3650-300** 3,5 V/230 V

**Nr. 3651-300** 3,5 V/120 V

without clock

**Nr. 3652-300** 3,5 V/230 V

**Nr. 3653-300** 3,5 V/120 V



## Extension modules

The ri-former® diagnostic station: aesthetically designed modules for optimal diagnostic possibilities. ri-former® and its extension modules fit in with any medical practice or hospital and are color-coordinated to match other Riester products.

### Handle module



#### Extension module, 1 handle

- The handles switch on and off automatically when removed from or replaced in the handle unit. The adjustable light intensity setting is maintained until the next examination.
- Ergonomic and non-slip.
- Rheotronic®: enables continuously adjustable brightness as well as manual switching on and off.
- Spiral cord stretches up to 3 m.
- Up to 4 handle modules available for expanding the ri-former® basic module.
- Complete with all mounting plate, plugs, screws, and instructions for assembly.

Nr. 300

### big ben®



#### big ben® extension module

- Generously dimensioned scale with 145.5-mm sides and high-contrast scale display guarantees optimum readability
- With extra sturdy wall bracket made of fiber-glass-reinforced plastic and extraordinary sturdy casing.
- Maximum error tolerance: +/- 3 mm Hg.
- Also available in latex-free version (when ordering please indicate LF for "latex-free" before the article number).
- Delivered with spacious basket for storage of tubes and cuffs, as well as wall mounting plate, plugs and screws.
- Individualized basket assembly thanks to expandable spiral cord.

Nr. 3655-103 Bandage cuff Adult

Nr. 3655-106 Hook cuff Adult

Nr. 3655-109 Velcro cuff Adult

Nr. 3655-123 Velcro cuff Large adult

Nr. 3655-130 Velcro cuff Child

### ri-thermo® N



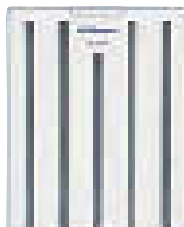
#### Infra-red thermometer ri-thermo® N

- Precise measurement of the body temperature in the ear. Clinical validation.
- Measurement takes approx. 1-2 seconds.
- Digital display for optimum readability of the measurement values in °C or in °F.
- Memory function for 12 measurements.
- Probe covers: A new probe cover should be used for every measurement in the ear for reasons of hygiene and accuracy. No measurement should be made without a probe cover!
- Two alkaline manganese batteries type AA 1.5 V included for approx. 1,000 measurements. Supplied with 25 probe covers in attractive sales packaging.

Nr. 3656 without anti-theft device

Nr. 3656-301 with anti-theft device

### Ear specula dispenser



#### ri-spec ear specula dispenser

- Specula dispenser with 5 tubes for up to 5 specula sizes.
- A hygienic and practical solution, dispenses a new speculum for each examination.
- Easy to clean and disinfect.
- Easy to refill and can be closed with a cover.
- Filling level of specula tubes visually displayed.
- Suitable for all Riester specula – except uni®/econom® with metal attachment.
- Can also be used independent of the diagnostic station.
- Complete with plugs and screws.

Nr. 3654

## Sets

Practical instrument sets for E.N.T., ophthalmoscopy/retinoscopy and dermatology. The basic sets delivered without batteries, ri-accu® and ri-charger®. These accessories are shown under each respective art. no. and must be ordered separately. Due to the variety of possible instrument combinations, we show only a portion of all the instrument options in set form. We are happy to provide information on individualized product combinations upon request.

- 2.5-V instruments are equipped with HL halogen lamps and 3.5-V instruments are equipped with XL xenon lamps or LEDs.
- All sets are supplied in a deluxe hard case with safety catches.
- Thanks to the bayonet fitting it is easy to replace the instrument heads.











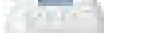






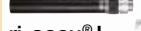




### ri-scope® L otoscope

- Tubes with 4 black, re-usable ear specula sizes 2 - 5 mm and each with 3 blue 2.5-mm (L1/L2) or 2-mm (L3) and 4-mm disposable ear specula.
- Operation lens with 4-fold magnification included only with L3.
- Deluxe hard case with safety catch.
- One spare lamp.



### ri-scope® L ophthalmoscope

- Deluxe hard case with safety catch.
- Separate magnifying glass with 5-fold magnification.
- One spare lamp.

<p><b>Battery handle, Type C with rheotronic®</b> For 2 alkaline batteries, Type C or ri-accu®</p>  <p><b>Alkaline battery, Type C</b></p>  <p><b>ri-accu® NiMH</b></p>  <p><b>ri-charger®</b></p> 	<p>Nr. 3700 Nr. 3716 Nr. 3701</p> <p>Nr. 10686</p> <p>Nr. 10681 Nr. 10700 Nr. 10701</p>	<p>L1 HL 2,5 V L2 HL 2,5 V L3 HL 2,5 V</p> <p>for 2,5 V</p> <p>for 2,5 V 230 V 120 V</p>	<p>Nr. 3722 Nr. 3723</p> <p>Nr. 10686</p> <p>Nr. 10681 Nr. 10700 Nr. 10701</p> <p>L1 HL 2,5 V L2 HL 2,5 V</p> <p>for 2,5 V</p> <p>for 2,5 V 230 V 120 V</p>
<p><b>Battery handle, Type C with rheotronic®</b> For 2 Li batteries</p>  <p><b>Li battery</b></p> 	<p>Nr. 3702 Nr. 3703 Nr. 3704</p> <p>Nr. 11287</p>	<p>L1 XL 3,5 V L2 LED 3,5 V L3 LED 3,5 V</p> <p>for 3,5 V</p>	<p>Nr. 3724 Nr. 3725 Nr. 3726</p> <p>Nr. 11287</p> <p>L1 XL 3,5 V L2 XL 3,5 V L3 XL 3,5 V</p> <p>for 3,5 V</p>
<p><b>Battery handle, Type C with rheotronic®</b> For ri-accu® L</p>  <p><b>ri-accu® L</b></p>  <p><b>ri-charger® L</b></p> 	<p>Nr. 3702-550 Nr. 3703-550 Nr. 3704-550</p> <p>Nr. 10691 Nr. 10705 Nr. 10706</p>	<p>L1 XL 3,5 V L2 LED 3,5 V L3 LED 3,5 V</p> <p>for 3,5 V 230 V 120 V</p>	<p>Nr. 3724-550 Nr. 3725-550 Nr. 3726-550</p> <p>Nr. 10691 Nr. 10705 Nr. 10706</p> <p>L1 XL 3,5 V L2 XL 3,5 V L3 XL 3,5 V</p> <p>for 3,5 V 230 V 120 V</p>
<p><b>Battery handle, Type AA with rheotronic®</b> For 2 alkaline batteries Type AA or ri-accu®</p>  <p><b>Alkaline batteries Type AA</b></p>  <p><b>ri-accu®</b></p>  <p><b>ri-charger®</b></p> 	<p>Nr. 3705 Nr. 3706</p> <p>Nr. 10685</p> <p>Nr. 10680 Nr. 10700 Nr. 10701</p>	<p>L1 HL 2,5 V L2 HL 2,5 V</p> <p>for 2,5 V</p> <p>for 2,5 V 230 V 120 V</p>	<p>Nr. 3727</p> <p>Nr. 10685</p> <p>Nr. 10680 Nr. 10700 Nr. 10701</p> <p>L1 HL 2,5 V</p> <p>for 2,5 V</p> <p>for 2,5 V 230 V 120 V</p>
<p><b>Battery handle, Type AA with rheotronic®</b> For 2 Li batteries</p>  <p><b>Li battery</b></p> 	<p>Nr. 3707 Nr. 3708 Nr. 3709</p> <p>Nr. 11287</p>	<p>L1 XL 3,5 V L2 LED 3,5 V L3 LED 3,5 V</p> <p>for 3,5 V</p>	<p>Nr. 3728 Nr. 3729 Nr. 3730</p> <p>Nr. 11287</p> <p>L1 XL 3,5 V L2 XL 3,5 V L3 XL 3,5 V</p> <p>for 3,5 V</p>
<p><b>Battery handle, Type AA with rheotronic®</b> For ri-accu® L</p>  <p><b>ri-accu® L</b></p>  <p><b>ri-charger® L</b></p> 	<p>Nr. 3707-550 Nr. 3708-550 Nr. 3709-550</p> <p>Nr. 10690 Nr. 10705 Nr. 10706</p>	<p>L1 XL 3,5 V L2 LED 3,5 V L3 LED 3,5 V</p> <p>for 3,5 V 230 V 120 V</p>	<p>Nr. 3728-550 Nr. 3729-550 Nr. 3730-550</p> <p>Nr. 10690 Nr. 10705 Nr. 10706</p> <p>L1 XL 3,5 V L2 XL 3,5 V L3 XL 3,5 V</p> <p>for 3,5 V 230 V 120 V</p>
<p><b>Plug-in handle with rheotronic®</b> For ri-accu® L</p>  <p><b>ri-accu® L</b></p> 	<p>Nr. 3710 Nr. 3711 Nr. 3712 Nr. 3713 Nr. 3714 Nr. 3715</p> <p>Nr. 10692</p>	<p>L1 XL 3,5 V/230 V L1 XL 3,5 V/120 V L2 LED 3,5 V/230 V L2 LED 3,5 V/120 V L3 LED 3,5 V/230 V L3 LED 3,5 V/120 V</p> <p>for 3,5 V</p>	<p>Nr. 3731 Nr. 3732 Nr. 3733 Nr. 3734 Nr. 3735 Nr. 3736</p> <p>Nr. 10692</p> <p>L1 XL 3,5 V/230 V L1 XL 3,5 V/120 V L2 XL 3,5 V/230 V L2 XL 3,5 V/120 V L3 XL 3,5 V/230 V L3 XL 3,5 V/120 V</p> <p>for 3,5 V</p>



**ri-scope® L otoscope/  
Ophthalmoscope**

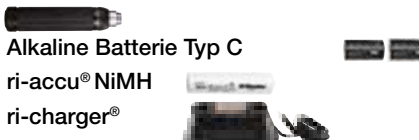
- Tubes with 4 black, re-usable ear specula sizes 2 - 5 mm and each with 3 blue 2.5-mm (L1/L2) or 2-mm (L3) and 4-mm disposable ear specula.
- Operation lens with 4-fold magnification available only with L3.
- Deluxe hard case with safety catch.
- Two spare lamps.

**ri-scope® E.N.T.**

ri-scope® F.O. otoscope, F.O. nasal speculum and F.O. tongue blade holder

- Replacement bulb for ri-scope® F.O. otoscope, F.O. nasal speculum and F.O. tongue blade holder
- Tubes with 4 black, re-usable ear specula sizes 2 - 5 mm and each with 3 blue 2.5-mm (L1/L2) or 2-mm (L3) and 4-mm disposable ear specula.
- Operation lens with 4-fold magnification included only with L3.
- Deluxe hard case with safety catch.
- One spare lamp.

**Battery handle, Type C with rheotronic®**  
For 2 alkaline batteries, Type C or ri-accu®



Nr. 3743	L1 HL 2,5 V
Nr. 3745	L3 Oto./L2 Oph. HL 2,5 V
Nr. 10686	for 2,5 V
Nr. 10681	for 2,5 V
Nr. 10700	230 V
Nr. 10701	120 V

Nr. 3759	L3 HL 2,5 V
Nr. 10686	for 2,5 V
Nr. 10681	for 2,5 V
Nr. 10700	230 V
Nr. 10701	120 V

**Battery handle, Type C with rheotronic®**  
For 2 Li batteries



Nr. 3744	L1 XL 3,5 V
Nr. 3746	L3 Oto./L2 Oph. LED/XL 3,5 V
Nr. 11287	for 3,5 V

Nr. 3760	L3 LED 3,5 V
Nr. 11287	for 3,5 V

**Battery handle, Type C with rheotronic®**  
For ri-accu® L



Nr. 3744-550	L1 XL 3,5 V
Nr. 3746-550	L3 Ot./L2 Op. LED/XL 3,5 V
Nr. 10691	for 3,5 V
Nr. 10705	230 V
Nr. 10706	120 V

Nr. 3760-550	L3 LED 3,5 V
Nr. 10691	for 3,5 V
Nr. 10705	230 V
Nr. 10706	120 V

**Battery handle, Type AA with rheotronic®**  
For 2 alkaline batteries Type AA or ri-accu®



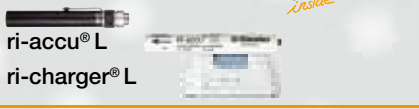
Nr. 3747	L2 Oto./L1 Oph. HL 2,5 V
Nr. 10685	for 2,5 V
Nr. 10700	230 V
Nr. 10701	120 V

**Battery handle, Type AA with rheotronic®**  
For 2 Li batteries



Nr. 3748	L2 Oto./L1 Oph. LED/XL 3,5 V
Nr. 11287	for 3,5 V

**Battery handle, Type AA with rheotronic®**  
For ri-accu® L



Nr. 3748-550	L2 Ot./L1 Op. LED/XL 3,5 V
Nr. 10690	for 3,5 V
Nr. 10705	230 V
Nr. 10706	120 V

**Plug-in handle with rheotronic®**  
For ri-accu® L



Nr. 3749	L3 Oto./L2 Oph. LED/XL 3,5 V
Nr. 3750	L3 Oto./L2 Oph. LED/XL 3,5 V
Nr. 10692	for 3,5 V

Nr. 3761	L3 LED 3,5 V/230 V
Nr. 3762	L3 LED 3,5 V/120 V



**ri-scope® praktikanter**

ri-scope® F.O. otoscope, F.O. nasal speculum, F.O. tongue blade holder and F.O. bent-arm illuminator

- Tubes with 4 black, re-usable ear specula sizes 2 - 5 mm and each with 3 blue 2.5-mm (L1/L2) or 2-mm (L3) and 4-mm disposable ear specula.
- Operation lens with 4-fold magnification included only with L3.
- Two laryngeal mirrors No. 3 and No. 4.
- Deluxe hard case with safety catch.
- One spare lamp.

**ri-scope® perfect**

ri-scope® F.O. otoscope, ophthalmoscope and F.O. tongue blade holder

- Replacement bulb for ri-scope® F.O. otoscope, F.O. tongue blade holder.
- Replacement bulb for ri-scope® ophthalmoscope.
- Tubes with 4 black, re-usable ear specula sizes 2 - 5 mm and each with 3 blue 2.5-mm (L1/L2) or 2-mm (L3) and 4-mm disposable ear specula.
- Operation lens with 4-fold magnification included only with L3.
- Deluxe hard case with safety catch.
- Two spare lamps.

**Battery handle, Type C with rheotronic®**  
For 2 alkaline batteries, Type C or ri-accu®



**Alkaline battery, Type C**



**ri-accu® NiMH  
ri-charger®**



**Nr. 3765**

L3 HL 2,5 V

**Nr. 3753**

L3 Oto./L2 Oph. HL 2,5 V

**Nr. 10686**

for 2,5 V

**Nr. 10686**

for 2,5 V

**Nr. 10681**

for 2,5 V

**Nr. 10681**

for 2,5 V

**Nr. 10700**

230 V

**Nr. 10700**

230 V

**Nr. 10701**

120 V

**Nr. 10701**

120 V

**Battery handle, Type C with rheotronic®**  
For 2 Li batteries



**Li-Batterie**



**Nr. 3766**

L3 LED 3,5 V

**Nr. 3754**

L3 Oto./L2 Oph. LED/XL 3,5 V

**Nr. 11287**

for 3,5 V

**Nr. 11287**

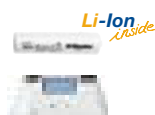
for 3,5 V

**Battery handle, Type C with rheotronic®**  
For ri-accu® L



**ri-accu® L**

**ri-charger® L**



**Nr. 3766-550**

L3 LED 3,5 V

**Nr. 3754-550**

L3 Oto./L2 Oph.  
LED/XL 3,5 V

**Nr. 10691**

for 3,5 V

**Nr. 10691**

for 3,5 V

**Nr. 10705**

230 V

**Nr. 10705**

230 V

**Nr. 10706**

120 V

**Nr. 10706**

120 V

**Plug-in handle with rheotronic®**

For ri-accu® L



**Nr. 3767**

L3 LED 3,5 V/230 V

**Nr. 3755**

L3 Oto./L2 Oph. LED/XL 3,5 V  
230 V

**Nr. 3768**

L3 LED 3,5 V/120 V

**Nr. 3756**

L3 Oto./L2 Oph. LED/XL 3,5 V  
120 V

**ri-accu® L**



**Nr. 10692**

for 3,5 V

**Nr. 10692**

for 3,5 V



**ri-scope® de luxe®**

ri-scope® F.O. otoscope, ophthalmoscope, F.O. nasal speculum, F.O. tongue blade holder and F.O. bent-arm illuminator

- Tubes with 4 black, re-usable ear specula sizes 2 - 5 mm and each with 3 blue 2.5-mm (L1/L2) or 2-mm (L3) and 4-mm disposable ear specula.
- Two laryngeal mirrors No. 3 and No. 4.
- Deluxe hard case with safety catch.
- Two spare lamps.

**ri-scope® slit retinoscope**

- Two fixation cards for dynamic retinoscopy.
- Deluxe hard case with safety catch.
- One spare lamp.

**Battery handle, Type C with rheotronic®**  
For 2 alkaline batteries, Type C or ri-accu®



**Alkaline battery, Type C**



**ri-accu® NiMH**  
**ri-charger®**



**Nr. 3771** L3 Oto./L2 Oph. HL 2,5 V

**Nr. 3410** HL 2,5 V

**Nr. 10686** for 2,5 V

**Nr. 10686** for 2,5 V

**Nr. 10681** for 2,5 V

**Nr. 10681** for 2,5 V

**Nr. 10700** 230 V

**Nr. 10700** 230 V

**Nr. 10701** 120 V

**Nr. 10701** 120 V

**Battery handle, Type C with rheotronic®**  
For 2 Li batteries



**Li-Batterie**



**Nr. 3772** L3 Oto./L2 Oph. LED/XL 3,5 V

**Nr. 3782** XL 3,5 V

**Nr. 11287** for 3,5 V

**Nr. 11287** for 3,5 V

**Battery handle, Type C with rheotronic®**  
For ri-accu® L



**ri-accu® L**



**ri-charger® L**

**Nr. 3772-550** L3 Oto./L2 Oph. LED/XL 3,5 V

**Nr. 3782-550** XL 3,5 V

**Nr. 10691** for 3,5 V

**Nr. 10691** for 3,5 V

**Nr. 10705** 230 V

**Nr. 10705** 230 V

**Nr. 10706** 120 V

**Nr. 10706** 120 V

**Plug-in handle with rheotronic®**  
For ri-accu® L



**Nr. 3773** L3 Oto./L2 Oph. LED/XL 3,5 V  
230 V

**Nr. 3783** XL 3,5 V/230 V  
**Nr. 3784** XL 3,5 V/120 V

**Nr. 3774** L3 Oto./L2 Oph. LED/XL 3,5 V  
120 V

**ri-accu® L**



**Nr. 10692** for 3,5 V

**Nr. 10692** for 3,5 V



**ri-scope® spot retinoscope**

- Two fixation cards for dynamic retinoscopy.
- Deluxe hard case with safety catch.
- One spare lamp.

**ri-vision® with slit retinoscope**

- ri-scope® retinoscope with slit lamp and ophthalmoscope L2
- Two fixation cards for dynamic retinoscopy.
  - Two spare lamps.

**Battery handle, Type C with rheotronic®**  
For 2 alkaline batteries, Type C or ri-accu®



**Alkaline battery, Type C**  
**ri-accu® NiMH**  
**ri-charger®**



**Nr. 3430**

HL 2,5 V

**Nr. 3792**

HL 2,5 V

**Battery handle, Type C with rheotronic®**  
For 2 Li batteries



**Li-Batterie**



**Nr. 3787**

XL 3,5 V

**Nr. 3794**

XL 3,5 V

**Battery handle, Type C with rheotronic®**  
For ri-accu® L



**ri-accu® L**  
**ri-charger® L**



**Nr. 3787-550**

XL 3,5 V

**Nr. 3794-550**

XL 3,5 V

**Nr. 10691**  
**Nr. 10705**  
**Nr. 10706**

for 3,5 V  
230 V  
120 V

**Nr. 10691**  
**Nr. 10705**  
**Nr. 10706**

for 3,5 V  
230 V  
120 V

**Plug-in handle with rheotronic®**  
For ri-accu® L



**ri-accu® L**



**Nr. 3788**  
**Nr. 3789**

XL 3,5 V/230 V  
XL 3,5 V/230 V

**Nr. 3795**  
**Nr. 3796**

XL 3,5 V/230 V  
XL 3,5 V/120 V

**Nr. 10692**

for 3,5 V

**Nr. 10692**

for 3,5 V



**ri-vision® with spot retinoscope**  
 ri-scope® retinoscope with spot-light and ophthalmoscope L2

- Two fixation cards for dynamic retinoscopy
- Two spare lamps.

**ri-derma®**

- Two sterilizable contact plates, with and without scaling.
- Deluxe hard case with safety catch.
- One spare lamp.

**Battery handle, Type C with rheotronic®**  
 For 2 alkaline batteries, Type C or ri-accu®



**Alkaline battery, Type C**



**ri-accu® NiMH  
 ri-charger®**



**Nr. 3799**

HL 2,5 V

**Nr. 3390**

HL 2,5 V

**Nr. 10686**

for 2,5 V

**Nr. 10686**

for 2,5 V

**Nr. 10681**

for 2,5 V

**Nr. 10681**

for 2,5 V

**Nr. 10700**

230 V

**Nr. 10700**

230 V

**Nr. 10701**

120 V

**Nr. 10701**

120 V

**Battery handle, Type C with rheotronic®**  
 For 2 Li batteries



**Li-Batterie**



**Nr. 3801**

XL 3,5 V

**Nr. 3777**

LED 3,5 V

**Nr. 11287**

for 3,5 V

**Nr. 11287**

for 3,5 V

**Battery handle, Type C with rheotronic®**  
 For ri-accu® L



**ri-accu® L**



**ri-charger® L**

**Nr. 3801-550**

XL 3,5 V

**Nr. 3777-550**

LED 3,5 V

**Nr. 10691**

for 3,5 V

**Nr. 10691**

for 3,5 V

**Nr. 10705**

230 V

**Nr. 10705**

230 V

**Nr. 10706**

120 V

**Nr. 10706**

120 V

**Plug-in handle with rheotronic®**  
 For ri-accu® L



**Nr. 3802**

XL 3,5 V/230 V

**Nr. 3778**

LED 3,5 V/230 V

**Nr. 3803**

XL 3,5 V/120 V

**Nr. 3779**

LED 3,5 V/120 V

**ri-accu® L**



**Nr. 10692**

for 3,5 V

**Nr. 10692**

for 3,5 V



diplomat-presameter®



minimus II®



R1 shock-proof



exacta®



big ben®



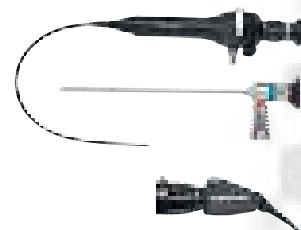
ri-champion N®



ri-mini®/pen-scope®



E.N.T. endoscopes



ri-scope® L

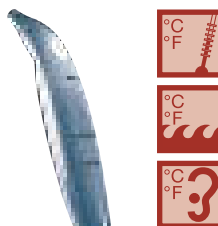
LED + Li-Ion  
*inside*



ri-former®



ri-thermo N®



cardiophon



All Pupil II



ri-focus® LED



ri-integral



ri-vital®



Riester offers a large selection of products for a variety of applications, including

Sphygmomanometers | Instruments for E.N.T.,  
Ophthalmological Instruments | Dermatological Instruments |  
Thermometers | Stethoscopes | Headmirrors, Headlamps,  
Examination lamps | Laryngoscopes | Gynecological Instruments  
| Percussion hammers | Vital signs/Pulse oximeters | Tuning forks

Dynamometers | Pressure infusion instruments | Veterinary  
instruments |

You can find detailed descriptions of the products in our  
catalog (Order no. 51231-50). Or log on to our website:  
[www.riester.de](http://www.riester.de).

Rudolf Riester GmbH

P.O. Box 35 • DE-72417 Jungingen

Germany

Tel.: +49 (0)74 77-92 70-0

Fax: +49 (0)74 77-92 70-70

info@riester.de

[www.riester.de](http://www.riester.de)