



# DUS 60

## Technical Specifications

Convex array:  
C361-2



Micro-convex array:  
C611-2



Linear array:  
L743-2



Endovaginal:  
E611-2



Endorectal:  
E741-2



Linear array:  
L761-2



### General:

Imaging mode: B,2B, 4B, B+M,M, and PW  
 Gray scales: 256  
 Display: 12.1" TFT-LCD  
 Transducer frequency: 2.0-10.0 MHZ  
 Transducer connector: 2 standard  
 Beam-forming: Phase Inversion Harmonic Imaging  
 Multi-Beam Technology  
 Synthetic Receiving Aperture  
 Dynamic Receiving Focusing  
 Real-time Dynamic Aperture  
 Dynamic Frequency Scanning  
 Dynamic Apodization  
 Scanning angle: Up to 152 degrees (transducer dependent)  
 Scanning depth (mm): From 19 to 324 (transducer dependent)  
 Applications: Abdomen, obstetrics, gynecology, small parts, musculoskeletal, cardiology, peripheral vascular, urology

### Functions:

Cine loop: 256 frames bidirectional cine-loop  
 Zoom: X1.0, X1.2, X1.4, X1.6, X2.0, X2.4, X3.0, X4.0 in distance  
 Panoramic zoom in real-time and freeze  
 Storage media: Built-in Flash, Internal large capacity data storage  
 Built-in image archive: 504MB built-in image storage  
 Body mark: >130 types  
 Transducer auto-detection

### Others:

Peripheral ports: S-video output: 1  
 Video output: 1  
 VGA output port: 1  
 USB port: 2  
 Ethernet port: 1  
 Remote control: 1  
 Footswitch port: 1

Power supply: 100V-240V~50Hz/60Hz  
 Lithium battery: Continuous operation for up to 2 hours  
 Dimensions: 330mm(13.0") (L) X 220mm(8.7") (W) X 320mm (12.6") (H)  
 Net weight: 7.1kg (15.7 lb)

### Imaging Processing:

Pre-processing: Dynamic Range  
 Frame Persist  
 Gain  
 8-segment TGC adjustment  
 IP (Image Process)  
 Post-processing: Gray map  
 Speckle Reduction Technology  
 Pseudo-color  
 Gray Auto Control  
 Black / white invert  
 Left / right invert  
 Up / down invert  
 Image rotation at 90° interval

### Measurement & Calculation:

B-mode: Distance, circumference, area, volume, ratio, %stenosis, histogram, and angle  
 M-mode: Distance, time, slope, and heart rate  
 Doppler: Time, heart rate, velocity, acceleration, trace, and RI  
 Software packages: General, obstetric, gynecology, small parts, orthopedics, cardiology, peripheral vascular, and urology

### Display:

Date, Time, Probe Frequency, Frame Rate, Patient Name, Patient ID, Hospital Name, Depth, Frame Rate, Exam Type, Measurement Values, Body Marks, Annotation, Probe Position

### Standard Configurations:

DUS 60 main unit  
 12.1" TFT-LCD monitor

Two transducer connectors  
 Pulsed wave Doppler  
 Multiple-pseudo-color imaging  
 256 frames cine loop memory  
 504MB built-in image storage  
 Two USB ports  
 Measurement & calculation software packages  
 Convex array transducer:  
 C361-2 (2.5/3.5/4.5/H2.5/H4.7MHz)

### Options:

Micro-convex array transducer:  
 C611-2 (5.5/6.5/7.5/H4.5/H4.7MHz)  
 Linear array transducer:  
 L761-2 (6.5/7.5/8.5/H4.5/H4.7MHz)  
 Linear array transducer:  
 L743-2 (6.5/7.5/8.5/H4.5/H4.7MHz)  
 Endovaginal transducer:  
 E611-2 (5.5/6.5/7.5/H4.5/H4.7MHz)  
 Endorectal transducer:  
 E741-2 (6.5/7.5/8.5/H4.5/H4.7MHz)  
 Needle-guide brackets for transducers  
 Large capacity data storage  
 Video printer  
 Laser printer  
 Inkjet printer  
 Footswitch  
 Li-on battery  
 Mobile trolley  
 Hand-carry bag  
 DICOM 3.0  
 UMS100 workstation software

# DUS 60

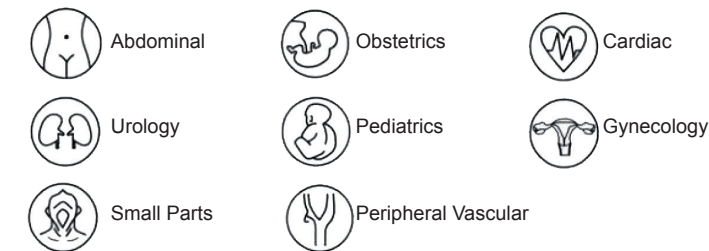
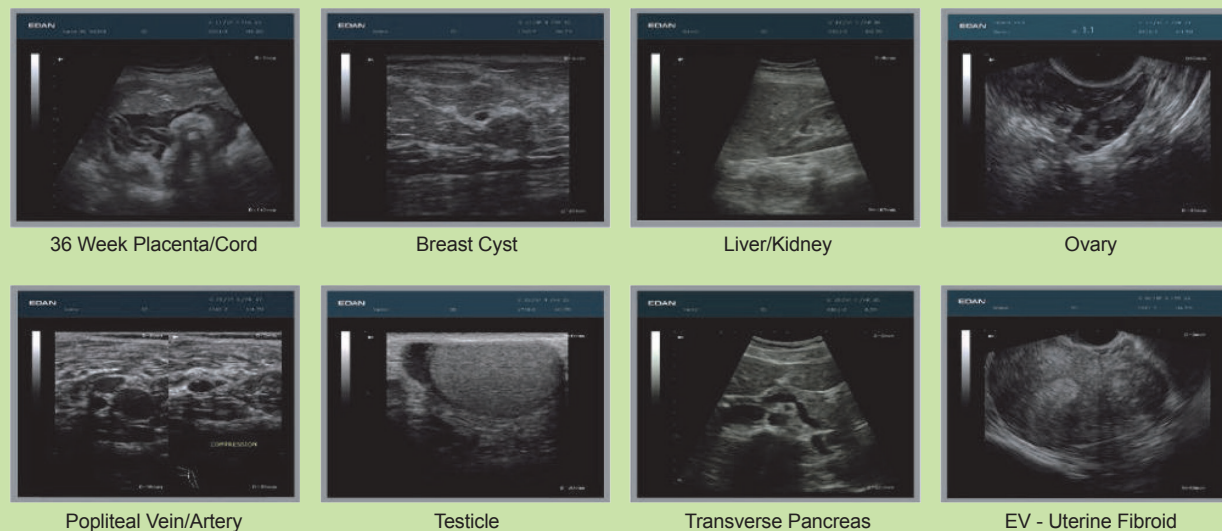
## Digital Ultrasonic Diagnostic Imaging System





## DUS 60

The DUS 60 is an impressive new compact ultrasound system, providing superb value and quality across the entire range of applications. The addition of PW Doppler increases diagnostic information content.



### > Powerful technologies to increase your diagnostic confidence

- Phase Inversion Harmonic Imaging technology provides best-in-class image quality
- PW Doppler supplies physiologic information for increased diagnostic value
- Five-frequency transducers increases versatility

### > Go anywhere you need to go

- Compact and lightweight design for excellent mobility
- Built-in battery provides up to 2 hours of point-of-care-imaging
- Large capacity data storage

### > Intuitive user-friendly design

- One touch image optimization via smart IP key
- Backlit, easy-to-use control panel
- User-defined keys to customize your work-flow

### > Practical tools enhance efficiency

- Intelligent 8-segment TGC for precise adjustment
- Multi-format data transfer via USB and DICOM
- Multiple-pseudo-color options enhance image presentation