



CE 0434



ISO 13485

## Technical Description

### General Description

System design	HCU with LCD monitor, monitor angle 30 degree adjustable
Net weight	6kg
Image mode:	B, B/B, M, B/M, 4B, THI
Gray scale:	256
Display:	12" anti-glare LCD monitor
Transducer frequency:	Up to 12 MHz (depending on transducers)
Transducer connector:	2 (standard)
Digital technology	Tissue harmonic imaging (THI) Digital Beam-forming (DBF) M-tuning one-button image optimization Five variable frequency Chroma function
Scanning angle	Up to 180 degree (depending on transducers)
Scanning depth (mm)	Up to 320 (depending on transducers)

### Imaging processing

Pre-processing	8-segment TGC Imaging processing Dynamic range Image enhancement Scanning angle Power range
Post-processing	Image rotation at 90 degree interval Gray-map Black/White reverse Left-right reverse Up-down reverse

### Functions

Storage media	1G standard image storage capacity, USB drive
Zoom	Panoramic zoom in real-time

### Measurement and Calculation

B-mode	Distance, circumference, area, volume, angle, fetal growth curve, prostate volume
M-mode	Distance, time, heart rate
Software packages	Abdominal, gynecological, obstetrical, cardiological, small parts, urological

### Others

Peripheral port	S-Video, VGA, two USB ports, footswitch, LAN, print control USB port: 2 DICOM 3.0
Power supply	100-220VAC, 50Hz/60Hz
Dimension	340mm × 340mm × 150mm (L × W × H)

### Standard Configuration

A6 main unit  
12" non-interlaced non-flickering LCD monitor  
Two standard active transducer connectors  
THI (Tissue Harmonic Imaging)  
1G built-in flash storage  
Two USB ports  
Measurement & calculation software packages

### Probe Options

Curved probe (Abdominal, OB/GYN):  
C351 (2-6MHz)  
C543 (3-8MHz)  
Linear probe (Vascular, Small parts):  
L745 (5-12MHz)  
L773 (5-11MHz)  
L012 (6-13MHz)  
L663V (4-9MHz)  
Micro-curved probe (Transvaginal):  
6V4 (4-9MHz)  
Micro-curved probe (Cardiology):  
C312 (2-5MHz)  
C612 (4-9MHz)  
EC2 (4-9MHz)

### Optional Accessories

Needle-guided bracket  
One-to-Two transducer converter  
Footswitch  
Mobile trolley  
Carrying bag  
B/W video printer

# A6

## Ultimate Performance, Like Nothing Else

**SonoScape**

Yizhe Building, Yuquan Road, Shenzhen, 518051, China  
Tel: +86-755-26722890 Fax: +86-755-26722850  
E-mail: [sonoscape@sonoscape.net](mailto:sonoscape@sonoscape.net) [www.sonoscape.com](http://www.sonoscape.com)

**SonoScape**  
[www.sonoscape.com](http://www.sonoscape.com)



SonoScape is a high technology company which specializes in manufacturing and developing ultrasound systems and ultrasound transducers for many years. Supported by numerous innovative technologies, SonoScape introduces A6 as a reliable and easy-to-use Hand-carried Ultrasound system with premium image quality which is comparable to high-end cart-based BW ultrasound systems.

- + Elegant outline, only 6 kg weight and optional mobile trolley, A6 creates a comfortable working environment.
- + 12-inch angle adjustable LCD, two transducer sockets, A6 minimizes your working fatigue.
- + Premium B/W ultrasound technologies, abundant software packages and a series of high density probes, A6 assists you in reaching new heights of various clinical applications.



Exclusive 12" adjustable LCD



Although designed as an ultra compact HCU, A6 combines the essential features of easy-to-use and high quality image. These features enable it to maximize doctors' confidence and comfort.



- + Tissue Harmonic Imaging: significantly improves Image contrast and resolution
- + Five Variable Frequencies: minimize the inconvenience of frequently changing probes working with broad band probes.
- + M-Tuning function : one-key to optimize the image quality automatically.
- + One Button quick operation: Save, Report, Print, File, Comment, Patient, THI, Clipboard and nine quick keys for Obstetric measurements
- + Abundant Body Marks for quick access to different applications



As a versatile but light weight HCU system, A6 is a reliable and efficient tool for medical professionals anytime and anywhere.

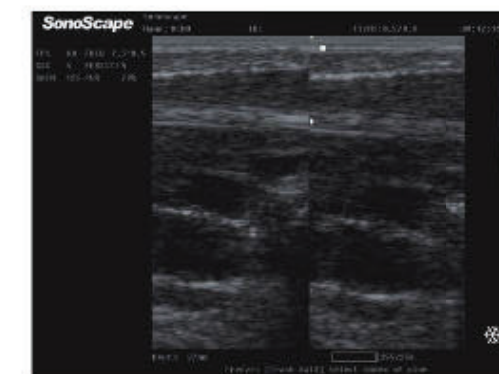
- + Comprehensive application fields: general, radiology, OB/GYN, vascular, urology, anesthesia, emergency, ICU, physiotherapy, MSK, pediatric, Shared Services, etc.
- + Compatible to a range of HD transducers including 180 degree HD endocavity probe with temperature-detection technology
- + Optional Built-in Li-ion Battery supports for various point-of-care usage
- + Super documentation abilities: USB storage, PDF report, AVI/JPEG, DICOM, etc.



Liver



Uterus



2B Tendon



Clipboard