

The BURDICK® Vision™ Premier Holter System

Our top-of-the-line system for advanced Holter analysis

Primary Users

Physician practices, hospitals, cardiologists, and researchers

Primary Benefits

Additional features. Includes everything our Vision product offers, plus significant enhancements that do most of the categorization for you and allow a more thorough analysis.

Easy analysis. Automatically categorizes Holter recordings into a comprehensive list of unique morphology forms.

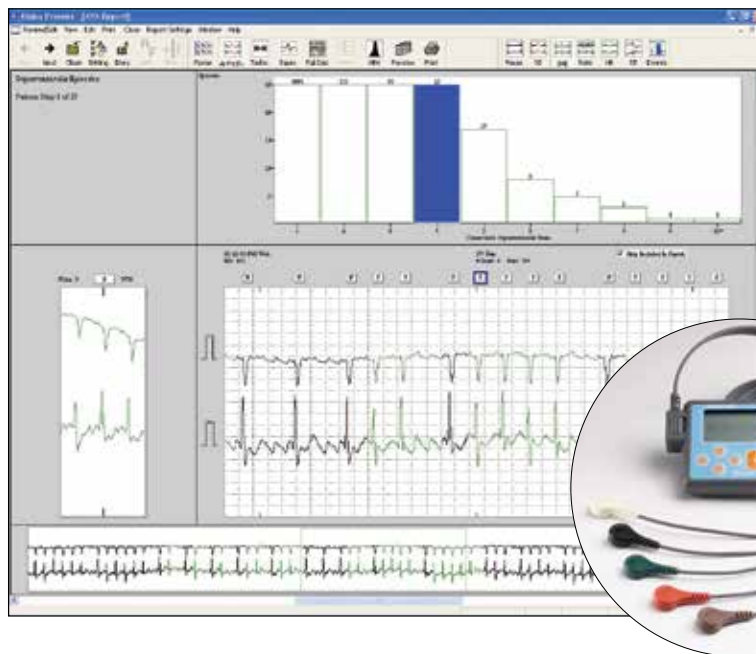
Accuracy. Independent studies using American Heart Association (AHA) and Massachusetts Institute of Technology (MIT) standardized databases show Vision Premier software is 99.95% accurate in Positive Predictive Value for classifying normal beats and 99.61% accurate in Positive Predictive Value for classifying abnormal beats.

Connectivity. Opt for industry-standard HL7 to enable communication between Vision Premier and various information systems including our HeartCentrix® data management solutions.

Flexibility. Advanced analysis tools such as superimposition help isolate and identify arrhythmias.

Customization. Gives you the flexibility to easily customize your reports and to set clinical limits according to your preferences and protocols.

Confidence. With nearly sixty years developing tools for cardiac diagnosis, Cardiac Science has the experience required for dependable results.



Burdick 4250
Digital Holter
Recorder

For customers who need an advanced Holter monitoring solution, the Burdick Vision Premier Holter System by Cardiac Science provides a powerful diagnostic tool. The Vision Premier system adds expanded viewing choices and a more comprehensive list of diagnostic tools to the easy-to-use Vision software.

Advanced functionality for accurate diagnoses

The Burdick Vision Premier software features advanced capabilities, including automatic categorization of beats, tachogram review, and full-disclosure viewing, providing the tools needed for even the most sophisticated analysis.

- + Vision Premier automatically categorizes the Holter information into 13 separate morphology forms, including normal, ventricular, paced, supraventricular extrasystole (SVE), unknown, and artifact.
- + Software includes a category-specific histogram comparing frequency and severity for review of arrhythmia.
- + The program labels each abnormality in a 7-second diagnostic strip with classification, time of occurrence, heart rate, and beat annotations. Additional ECG-strip information can be inserted at any point.
- + On-screen displays allow review or editing either globally or by individual episode.
- + Vision Premier automatically analyzes ST changes in all three channels and adjusts the analysis for different heart rates.
- + The unique Tachogram Review marks atrial fib/flutter regions for review and printing, allowing quick identification of rate-related abnormalities.
- + On-screen calipers allow for easy, precise measurements.
- + Patient diary times entries for coordination of results and symptoms.
- + System provides a 30-second, compressed full-disclosure display.
- + Superimposition features a single- or multi-beat mode complemented with a 30-second compressed full-disclosure review and RR interval plot.

Proven accuracy for dependable results

Used by thousands of clinicians throughout the world, the Vision Premier system offers these advanced features:

- + Comprehensive data collection and reporting for up to 48 hours of 3-channel ECG recordings.
- + Consistent results with 99.95% accuracy, according to MIT and AHA studies.
- + ECG verification during patient hook-up to ensure signal quality on-screen before the patient leaves the office, saving time and increasing patient convenience.
- + System algorithms, based on more than 25 years of research, that automatically identify abnormalities and compile them into easy-to-read reports.

Reports the way you want them

In just minutes you'll have complete printed reports in your hands – in the format you choose. Plus, you can preview them on-screen first. It's fast, easy, and convenient. Reporting options include:

- + HR/ST trend graphs, highlighting areas of concern for easy identification.
- + Choice of full-sized diagnostic ECG strips or paper, and time-saving "mini" format.
- + Functionality to fax or e-mail final reports.
- + Full-disclosure reports that print all or any part of a patient's 24- to 48-hour recordings in various formats, such as one, two, or three channels at 10, 30, or 60 seconds per line.
- + Comprehensive ST report with each ST episode including deviation, slope, duration, and heart rate at onset/offset.
- + Customizable physician comments that can be added before printing.

You won't find an easier system with this much power

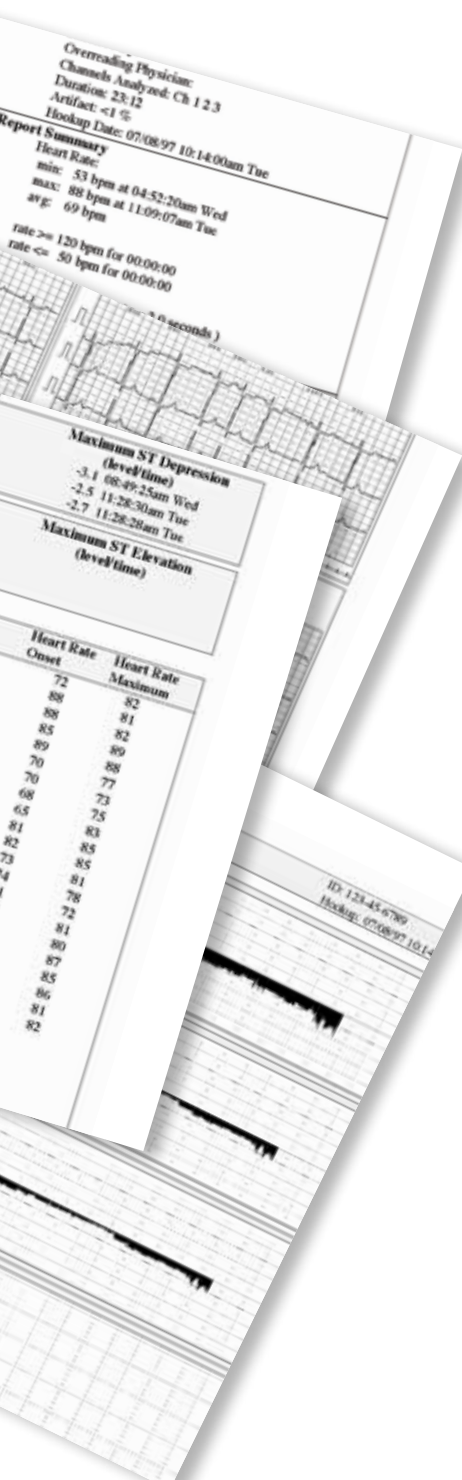
Vision Premier's advanced functionality, easy-to follow icons, logical on-screen command buttons, pull-down menu, and point-and-click accessibility make it easy to get results quickly. Here's how:

- + A QuickStep Wizard guides you through each phase of Holter testing with easy-to-follow menus.
- + Tested to work with Microsoft Windows XP and Windows 7, Vision Premier runs on today's latest software and hardware.
- + It takes just one step to change display formats or add ECG strips.
- + In the full-disclosure review, the normal, paced, artifact, supraventricular, and ventricular beats are coded with different colors to make review easy.

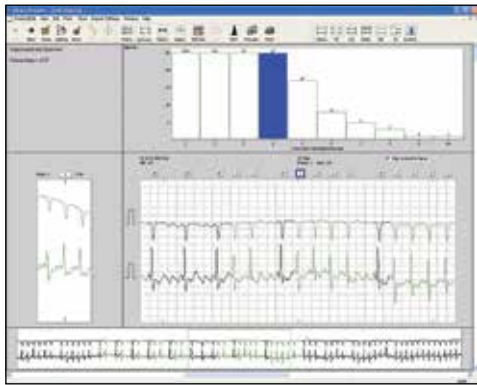
Access and exchange Holter data wherever and whenever you want

With Vision Premier you can access and exchange Holter data whenever you wish throughout your healthcare delivery system. Just imagine the flexibility, freedom, and control this provides.

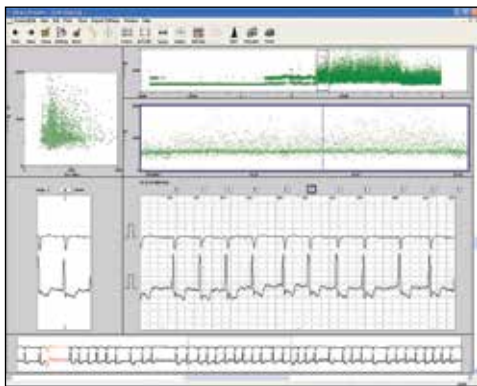
- + Use Vision Premier's optional Vision Remote to access and manipulate Holter data – any time of the day or night from any PC.
- + Immediately fax reports directly from your PC.
- + Vision Premier is compatible with most popular networking systems, so accessing and sharing data from workstations on your existing network is easily accomplished.
- + E-mail summary reports to other locations for review and editing using software or the custom viewer provided with Vision Premier.



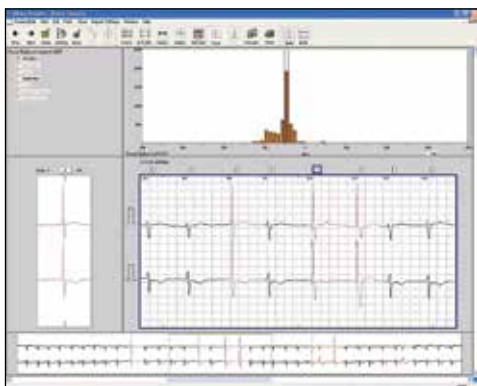
Choose among these system options to expand functionality



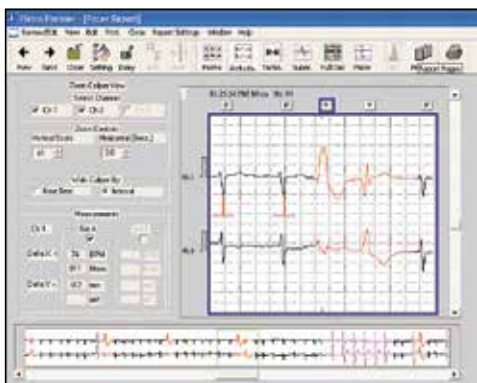
Arrhythmia review screen provides detailed analysis of severity and frequency at a glance.



The tachogram plot of R-R intervals highlights episodes of atrial fibrillation and flutter.



Unique pacemaker software provides detailed analysis of pacemaker functionality.



On-screen calipers allow precise measurement of QRS intervals and amplitude.

The system also features a variety of software tools that provide even more capabilities to meet your needs, including:

Heart rate variability software

HRV software analyzes regulation of the sinoatrial node, the natural pacemaker of the heart. It measures the balance between sympathetic and vagus nerve activity, providing an indirect measure of heart health. The Vision Premier Holter System performs data trending in both time and frequency domains, allowing the flexibility required to care for a variety of patients.

Pacemaker analysis software

The system software detects atrial- and ventricular-pacer spikes from an internal pacemaker, tracking patient pacer activities through sense, capture, fire, and miscapture scenarios.

HL7 communications software

Industry-standard HL7 enables communication between Vision Premier and various information systems, including the suite of HeartCentrix data management solutions from Cardiac Science. Using a standard communication protocol, this program transfers Holter records for access and storage in a networked environment.

Remote mode

Vision Remote provides the ability to download data from a remote location and transmit to a central reviewing facility. This remote application allows for rapid turnaround of patient data and medical treatment when necessary. This tool is ideal for situations where Holter tests are performed at one location and interpreted at another.

The BURDICK® Vision™ Premier Holter System

TECHNICAL SPECIFICATIONS	
COMPUTER REQUIREMENTS	
OPERATING SYSTEM	Windows XP Professional SP3 and Windows 7 Professional SP1
PROCESSOR	Intel 2.0 GHz or better
MEMORY	<ul style="list-style-type: none"> • 512 MB RAM or greater for Windows XP Professional (32-bit) • 1 GB RAM or greater for Windows 7 (32-bit) • 2 GB RAM or greater for Windows 7 (64-bit)
HARD DRIVE	80 GB or greater
FREE HARD DRIVE SPACE	<ul style="list-style-type: none"> • 12 MB for the Vision Series application • 8 MB for electronic manuals (optional) • 250 MB for instructional AVIs (optional)
ARCHIVE MEDIA	CDR or CDRW drive
DISPLAY	17 in (432 mm) to 32 in (813 mm) SVGA monitor and display adapter supporting the following aspect ratios: 4:3 (1024 x 768 resolution); 5:4 (1280 x 1024) resolution; 16:10 (1280 x 800) resolution; and 16:9 (1280 x 720) resolution and large fonts
KEYBOARD AND MOUSE	101-key enhanced and 104-key Windows keyboard
PRINTER	HP PCL-5 compatible printer (laser or inkjet), USB 2.0 recommended, print resolution of 600 dpi or better
USB PORT (2.0 RECOMMENDED)	For USB download and SD card
OPTIONAL	
FAX/MODEM	at 56K baud
ETHERNET CARD	10/100 Mbps minimum
THIRD-PARTY SOFTWARE	
ROXIO DIRECT CD	ROXIO Direct CD version 5.0C up to 9.0 is required in order to back up and restore the Vision Series Software patient reports to a CDR or CDRW media for Windows XP Professional operating systems. (Not required for systems running Windows 7.)
ADOBE ACROBAT READER V6.0 OR LATER	Allows viewing of manuals online

NOTES

- + System performance on customer-supplied computers is the responsibility of the customer.
- + System security, access, and privacy of patient data is the responsibility of the customer.
- + If the computer is to be connected to a customer network, the customer must assign the IP-network address.
- + Anti-virus scanning software should be installed and is the responsibility of the customer.
- + Customer is responsible to provide hardware that meets the required country-of-origin regulatory standards.
- + Customer is responsible for applying security updates and patches to the system in accordance with their internal policies.

ORDERING INFORMATION

SYSTEM OPTIONS		
V51-	X	X
1		English language option
6		International language option
	D	Single 92516-01 Burdick 4250 digital recorder
	E	2-pack 92516-01 Burdick 4250 digital recorder
	F	5-pack 92516-01 Burdick 4250 digital recorder
	G	USB download cable for Burdick 4250
	I	Pacemaker analysis software
	J	Heart rate variability software option
	V	HL-7 communication software option

EXAMPLE CONFIGURATION

V51-	1	EGI	Vision Premier Software, English Language with USB, download cable, pacemaker analysis, and 2 Burdick 4250 Digital Recorders
------	---	-----	--

Not all configuration options are available. Please check with your Cardiac Science representative to learn about available configurations.

ACCESSORIES AND UPGRADES

92516-01	Burdick 4250 Digital Holter Recorder
XCL4250X5L	5-lead patient cable for Burdick 4250
XCL4250X7L	7-lead patient cable for Burdick 4250
XCL4250USB	USB download cable for Burdick 4250
XCA4250X01	Plastic holster for Burdick 4250
XCA4250D20	Disposable pouches for Burdick 4250 - set of 20
XCA4250D50	Disposable pouches for Burdick 4250 - set of 50
XDA4250X01	SD memory card formatted for Burdick 4250
XKTHOLT5LA	Patient prep kit for Burdick 4250s using 5-lead patient cable
XKTHOLT7LA	Patient prep kit for Burdick 4250s using 7-lead patient cable
063-1690-00	Remote retrieval mode software option

Cardiac Science Corporation • N7 W22025 Johnson Dr., Waukesha, WI 53186 USA • 262.953.3500 • US toll-free 800.426.0337 • Fax: 262.953.3499 • care@cardiacscience.com
Orders and Customer Care (US and International) • 262.953.3500 • US toll-free 800.426.0337 • Fax: 262.953.3499 • care@cardiacscience.com
Technical Support • (US) Fax: 262.953.3499 • technicalsupport@cardiacscience.com • http://websupport.cardiacscience.com/webchat/ • (International) internationalservice@cardiacscience.com
Cardiac Science International A/S • Kirke Vaerloesevej 14, DK-3500 Vaerloese, Denmark • +45.4438.0500 • Fax: +45.4438.0501 • international@cardiacscience.com
United Kingdom • The Manse, 39 Northenden Road, Sale, Manchester, M33 2DH, United Kingdom • +44.161.926.0000 • uk@cardiacscience.com
France • Parc de la Duranne, 565, Rue René Descartes, F-13857 Aix-en-Provence Cedex 3, France • +33.4.88.19.92.92 • france@cardiacscience.com
Central Europe (D, A, CH) • Oskar-Schindler-Strasse 3, D-50769 Köln, Germany • +49.221.33734.300 • centraleurope@cardiacscience.com
China • 6/F South Building, 829, Yi Shan Road, Shanghai 200233, China • +86.21.6495.9121 • china@cardiacscience.com