



CARDIOTECH CT-50

DIAGNOSTIC ULTRASOUND SYSTEM

CT-50 has been well designed on the basis of sophisticated survey of the real needs from specific target group. The accurate product orientation and optimized technological integration ensure CT-50 exert authentic accounts to pioneer the popularization.

FEATURES

- High resolution LCD screen
- Light-weight design for excellent mobility
- Color Doppler Flow Imaging
- Pulsed Wave Doppler
- Power (Directional Power) Doppler Imaging
- Multi-Beam-Forming
- Phased Inversion Harmonic Compound Imaging
- Speckle Resistance Imaging
- Spatial Compounding Imaging
- Multi-frequency broadband transducer selection
- Multi-language software packages
- Built-in rechargeable Li-ion battery (optional)
- DICOM 3.0 (optional)
- Large capacity integrated hard disk(optional)
- Footswitch (optional)
- Mobile trolley (optional)
- Carrying case (optional)
- Needle-guided brackets (optional)

TECHNICAL SPECIFICATIONS

- 12.1" high resolution LED monitor
- Hand carried
- Imaging modes: B, B+B, 4B, B+M, M, and PW
- THI, TSI, digital beam forming, speckle resistance
- Two transducer connectors
- 256 frames CINE loop memory
- 504MB built in image storage
- Two USB ports
- Measurement and calculation packages
- Built in lithium battery for continuous 2 hour work

TECHNOLOGIES

CT-50's advanced image technologies and dependable functionalities are essential to facilitate a sharp image acquisition and increase diagnostic confidence.



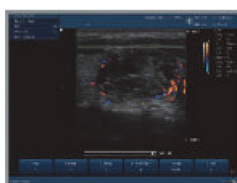
Color Doppler Imaging of Vertebral Artery



Color Doppler Imaging of Hepatic Vessels



Color Doppler Imaging of Kidney



High Sensitivity Color Doppler of Small Parts



Transvaginal 2B Scan of Ovary



Transvaginal Scan of Fetus



Harmonic Imaging Shows Near Field Details

TRANSDUCERS

Through more than ten year's technology accumulation and development, CardioTECH are committed to using the existing mastery to deliver the wide range transducer selection. Our entire endeavor offers CT-50 more flexibility and reliability.



Convex array:
C352UB



Micro-convex array:
C612UB



Micro-convex array:
C6152UB



Micro-convex array:
C422UB



Linear array:
L742UB



Linear array:
L1042UB



Linear array:
L552UB



Endovaginal:
E612UB