

# iPM Series Patient Monitor

The materials and information provided via this brochure are distributed internationally, but not all the products or services found on this brochure are necessarily available in your country or area. Please contact local office or agents to make sure of the availability of the relevant products or services.

#### Mindray Medical Netherlands B.V.

Drs.W.van Royenstraat 8, P.O. Box 26 3870 CA Hoevelaken, The Netherlands  
Voice: (31-33) 254-4911  
Fax: (31-33) 253-4280

#### Mindray Medical Italy S.r.l.

Via Girardo Patecchio, 4 20141 Milano Italy  
Voice: (39-02) 57-402-444  
Fax: (39-02) 5523-2018

#### Mindray Medical España S.L.

Avenida Manoteras 38, Edificio B, Bajo B008. 28050-Madrid Spain  
Voice: (34-91) 392 3754  
Fax: (34-91) 392 3756

#### Mindray Medical Germany GmbH

Zwischen den Bächen 4, 64625 Bensheim, Germany  
Voice: (49) 6251-17524-0  
Fax: (49) 6251-17524-20

#### Mindray (UK) Limited

3 Percy Road, St Johns Park, Huntingdon, Cambs, PE29 6SZ United Kingdom  
Voice: (44) 1480 416 840  
Fax: (44) 1480 436 588

#### Mindray Medical France SARL

Europarc Creteil 1 allée des cerisiers 94000 CRETEIL, France  
Voice: (33-1) 4513-9145  
Fax: (33-1) 4513-9151

#### Mindray Medical Rus Co.Ltd

2 Zvenigorodskaya, 13, bld 41, 123022 Moscow, Russia  
Voice: (7-499) 553-6036  
Fax: (7-499) 553-6039  
Hotline: 8-800-333-5323

#### Mindray Medical Colombia S.A.S

Room No.702,Torre UNIKA, Carrera 9 No.77-67, Bogota, Colombia  
Voice: (57-1) 3130892 / 3210916

#### Mindray do Brasil – Comércio e Distribuição de Equipamentos Médicos Ltda.

Rua Tavares Bastos, 329, Perdizes, São Paulo - SP, CEP 05012-020  
Telephones: (55 11) 3124-8026

#### Mindray Medical Mexico S. de R.L. de C.V.

Félix Parra # 175 Colonia. San José Insurgentes Sur Delegación Benito Juárez 03900 México, D. F.  
Voice: (52-55) 5661-9450 / (52-55) 5662-6620  
Fax: (52) 55 56 62 65 97

#### PT.Mindray Medical Indonesia

Menara Dea 1,Suite 301,Kav.E4 No.3/1, Mega Kuningan, Jakarta Selatan 12950  
Phone : +6221 5762650  
Fax:+ 6221 5762655

#### Mindray Medical Egypt

Ground Floor, 11 El Imam Metwally El Sharawi Street, Sheraton Heliopolis - El Nozha, Cairo, Egypt  
Tel : +2 02 22691047  
Fax : +2 02 22691046

#### Mindray Medical India Pvt. Ltd. (Delhi Office)

401/402, NDM-1, Netaji Subhash Place, Wazirpur District Center, New Delhi - 110034  
Voice: +91 11 4923 0000  
Fax: +91 11 4923 0030  
Toll Free - 1800 10 20 300

#### Mindray Medical India Pvt. Ltd. (Mumbai office)

B-404,City Point,Andheri Kurla Road, Andheri East, Mumbai, 400 059, India  
Voice: (91-22) 4020-0000  
Fax: (91-22) 4020-0011

#### Mindray Medical Teknoloji Istanbul Ltd. Sti.

Yenibosna, Köyaltı Mevkii,29 Ekim Cad. Kuyumcukent 2 Nolu Plaza Kat:2 Daire:1, Yenibosna, Istanbul, Turkey  
Voice: (90-212) 482 08 77  
Fax:(90-212) 482 08 78

#### Mindray Medical Thailand Limited

Thai Summit Tower Co., Ltd., No. 1768, New Phetchaburi Road, Bang Kapi Subdistrict, Huai Khwang District, Bangkok



## iPM Series Patient Monitor

### Your Efficient Partner for Acute Care



MINDRAY is a trademark of Shenzhen Mindray Bio-Medical Electronics Co.,Ltd. Specifications subject to changes without prior notice.  
© 2010-2011 Shenzhen Mindray Bio-Medical Electronics Co., Ltd. All rights reserved.  
P/N:ENG-iPM Series-210X285x4P-20111130

## mindray

Mindray is listed on the NYSE under the symbol "MR"  
Mindray Building, Keji 12th Road South, High-tech Industrial Park,  
Nanshan, Shenzhen 518057, P.R. China  
Tel: +86 755 8188 8998 Fax: +86 755 26582680  
E-mail: intl-market@mindray.com Website: www.mindray.com

**mindray**  
healthcare within reach



# iPM 8/10/12

## Your Efficient Partner for Acute Care

The iPM patient monitor series, including iPM 8, iPM 10, and iPM 12, has been designed to meet everyday clinical requirements, integrating seamlessly into the hospital workflow. In acute care, a patient monitor must be reliable, easy to use, upgradeable with advanced parameters, while allowing data access when and where needed. In case of patient transport, the device should be easy to carry. With its lightweight and plug-and-play modular design, powerful functions and intuitive user interface, the iPM patient monitor is therefore an optimal choice for acute care.

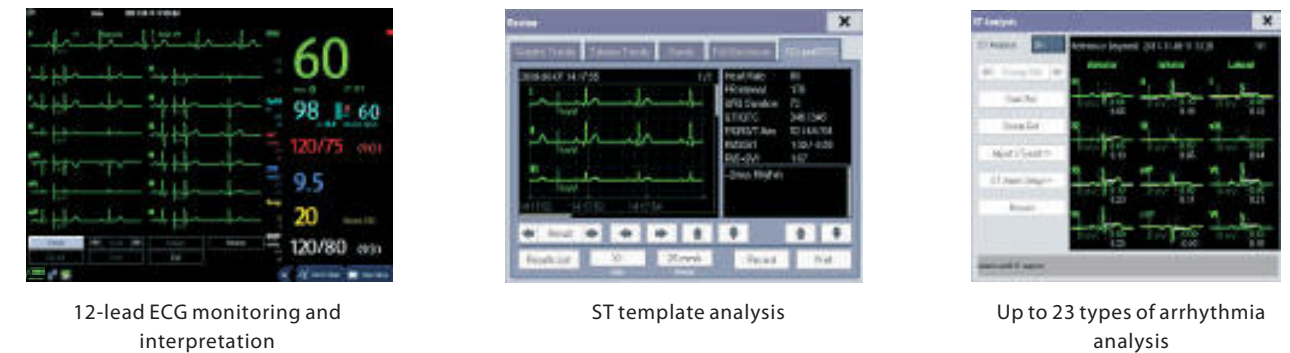
## Flexible Modular Design and Comprehensive Monitoring

The iPM main unit provides the most frequently used vital parameters including ECG, NIBP, SpO<sub>2</sub>, temperature and respiration. Thanks to iPM's plug-and-play modular structure, advanced monitoring functions such as IBP, C.O., EtCO<sub>2</sub> or multi-gas can be flexibly added according to specific clinical requirements. Additionally, modules with advanced parameter can be shared among beds, which offers a flexible and efficient solution.



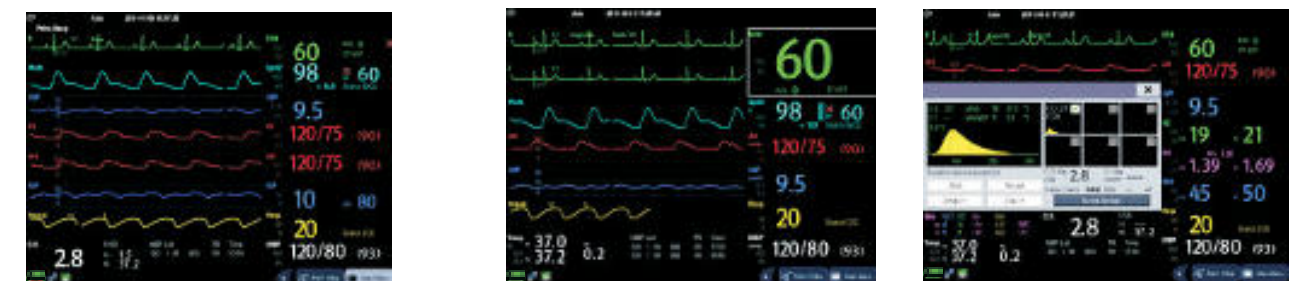
- Side stream EtCO<sub>2</sub>+IBP+C.O. Ideal solution for both intubated and non-intubated patients in acute care where capnography measurement is needed.
- Micro stream EtCO<sub>2</sub>+IBP+C.O. While supporting patients of all ages, the module has been designed especially for neonates.
- Main stream EtCO<sub>2</sub>+IBP+C.O. No warm-up time, short rising time, enhances efficiency.
- Multi-gas +IBP+C.O. World's smallest Anesthesia Gas module. Ideal solution for OR.

### Professional ECG tools, especially designed for cardiology departments.



- 12-lead ECG monitoring and interpretation
- ST template analysis
- Up to 23 types of arrhythmia analysis

### Advanced parameters through easy upgrades



- Up to 4 channels of IBP
- Multi-gas measurement
- C.O. measurement

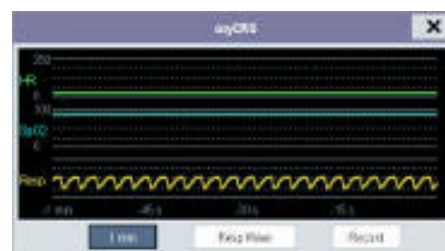


## Easy-to-Use Design for Intuitive Operation

- The iPM series has been designed to meet the requirements of various hospital environments. The parameters of the main unit fit every standard monitoring demand. The optional modules upgrade the iPM series to suit acute care monitoring.
- iPM's intuitive interface includes mass alarm set up, large font, and view-other-patient functions. This interface together with the touch screen, rotary knob, and customized quick keys, makes the iPM series exceptionally user friendly.
- The iPM series is compatible with a full range of mounting options. Its integrated quick-release mount allows to conveniently and quickly mount it for bedside monitoring and dismount it for transportation.
- iPM's built-in recorder and automatic event recording function guarantee the integrity of monitoring data.



Large font and customizable layout



OxyCRG display mode for neonatal monitoring



Mini-trend for easier trend analysis



Complete data review



Mass alarm settings on one screen



View-other-patient and remote alarm control functions



## Convenient and Ergonomic Design

- Its compact and ergonomic design allows the module to be easily inserted and released using just one hand.



- A one-touch mechanism allows to quickly disengage the monitor from the wall mount or rolling stand for transport.



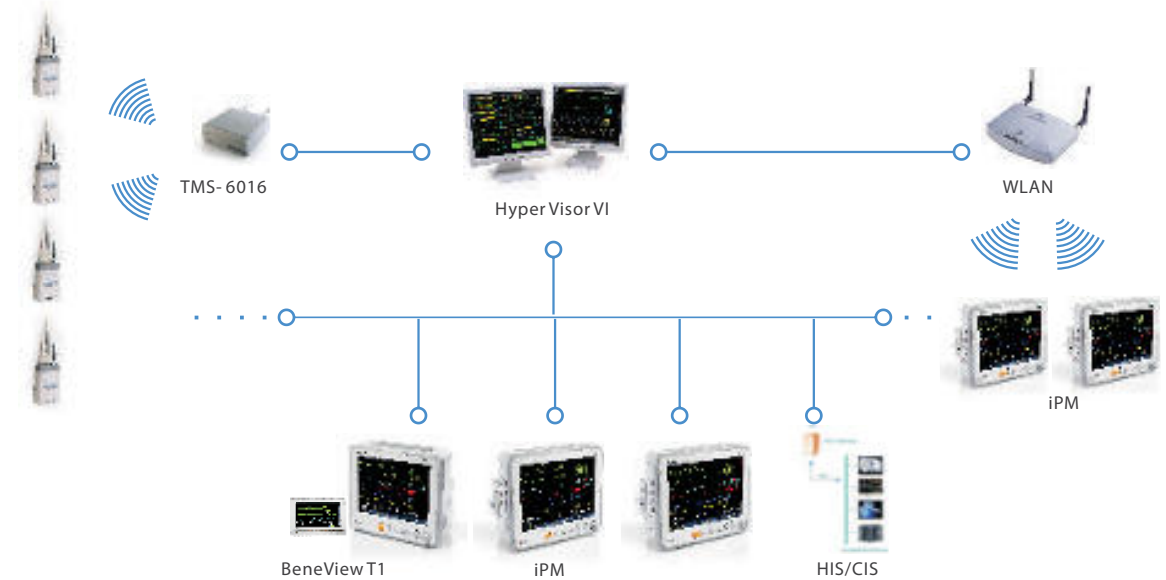
- A 360-degree viewable alarm for safe patient care. The top alarm indicator can be seen from any angle and thus allows the clinician to react quickly to critical situations.



- A bed-rail hook is embedded in the handle and allows for quick and reliable mounting.



## Optimized Connectivity for Improved Information-flow



Example of hospital network structure

- iPM is able to connect with the Central Monitor System and eGateway through both wired and wireless network.
- By applying HL7 protocol, iPM can be connected to the Hospital Information System. The solution improves the information-flow and eliminates the risk of transcription errors.
- iPM's view-other-patient function allows real time information exchange between bedsides. Up to 10 beds can be viewed simultaneously. This helps to establish an efficient network solution even without central monitoring system.
- iPM's capability to connect to Mindray's mobile monitor BeneView T1 simplifies patient transportation without loss of data. This solution secures constant patient monitoring and data integrity. No recalibration or reconfiguration is needed, which improves work efficiency.
- iPM records up to 48 hours of full disclosure waveforms and 120 hours of graphic and tabular trends. This helps caregivers to provide earlier and more accurate diagnosis.