

SSI-8000

DISCOVERY Outstanding Value and Versatility

The New Full Function SSI-8000 supports a full range of applications, from abdominal, OB/GYN, small parts, and pediatric, to cardiovascular imaging. This high-end system is designed to deliver outstanding value for our customers worldwide with highlights as below:

Accuracy and Clarity:

SonoScape has been focusing on what are the most important for ultrasound professionals, super imaging clarity and accuracy.

The SSI-8000 delivers uncompromised contrast resolution and penetration, thanks to SonoScape innovative imaging technology and unique transducer technology.

Full Functions:

The SSI-8000 is designed as a complete full-featured high-end system for a comprehensive advanced multi-specialty applications, from advanced cardiology exam to volumetric 4D imaging.

More Comfortable:

For this new system, the first of all features is very easy to use.

Without exceptional scanning experience, even new practitioners can achieve unmatched image quality for increased diagnostic confidence.

With the elegant design, operators can easily achieve optimal device positioning and adjust the monitor to the most comfortable viewing location.



SonoScape

Yizhe Building, Yuquan Road, Shenzhen, 518051, China

Tel: 86-755-26722890 Fax: 86-755-26722850

E-mail: market@sonoscape.net www.sonoscape.com

SSI-8000

Discovering Outstanding Value in Echocardiography



SonoScape

Caring for Life through Innovation



The Cutting-edge Technology for Accuracy and Clarity

- **High Quality Noise Filter**

HQNF technology can efficiently reduce Doppler noise of the whole ultrasound system, providing improved color flow and spectral Doppler images.

- **Multi-beam Parallel Processing Technology**

Multi-beam imaging can enhance lateral and time resolution, so that it can dramatically help the diagnosis of cardiovascular disease and also lays a good foundation on real-time 3D imaging.

- **Stress Echocardiography**

Stress echocardiography is the combination of 2D echocardiography with a physical or pharmacological stress. It can determine how the heart muscles respond to stress, mainly used to diagnose and evaluate coronary artery disease.

- **μ-Scan**

μ-Scan uses real-time advanced image processing algorithm to eliminate speckle and noise artifact, enhancing tissue margins and borders by correcting discontinuity between different regions allowing improved visualization of real tissue information.

- **M-tuning**

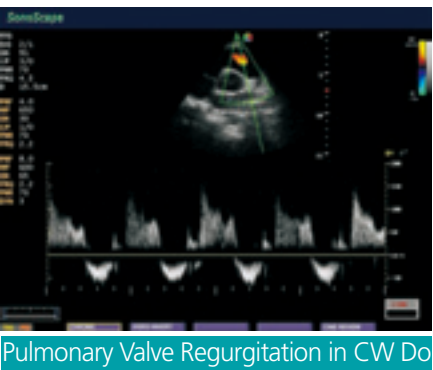
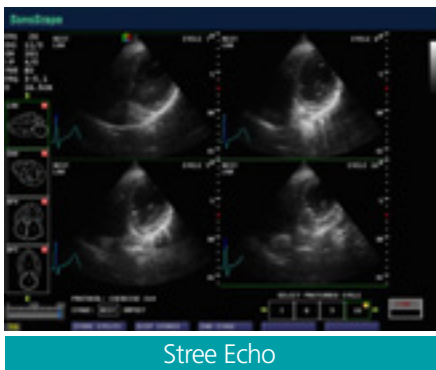
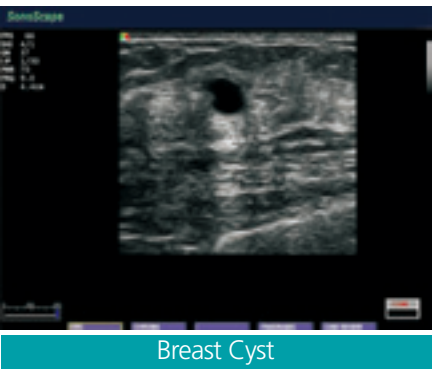
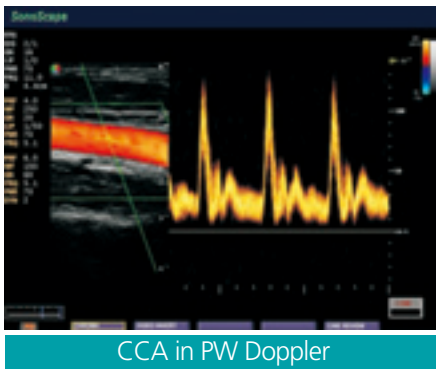
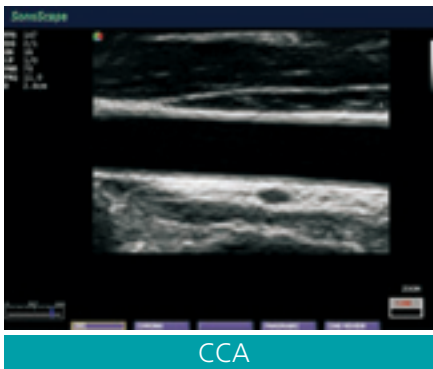
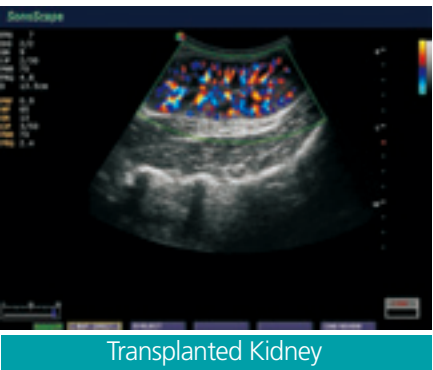
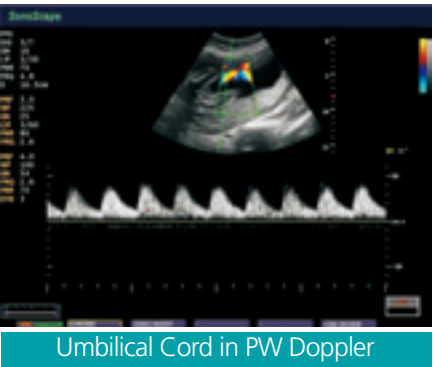
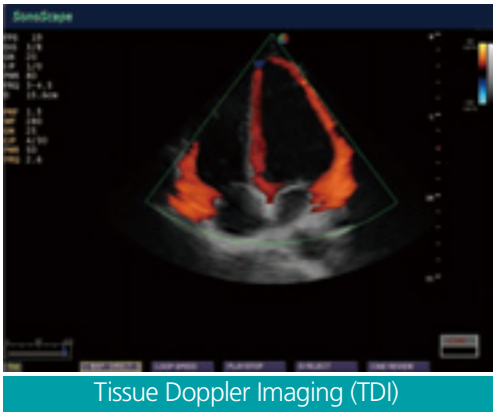
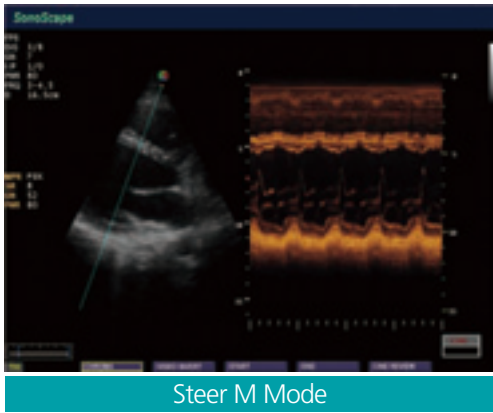
M-tuning is one button image optimization technology, providing you quick B-mode and Spectral Doppler image optimization by clicking one button. It can shorten examination time and ensure optimal results and more accurate diagnosis.

- **Real-time 3D (4D)**

This premium technology is often used in obstetric ultrasonography, providing real time three dimensional images of the fetus. Many high-end features, such as multi-slice and clip plane, will help you make detailed and accurate analysis.

The Powerful Architecture and Multi-Specialty Performance

The SSI-8000 is a full function system providing a complete ultrasound solution. From general imaging needs to special requirements in cardiology, OB/GYN, urology, MSK and anesthesiology. The system supports smooth 4D imaging with optimal volume resolution. For cardiac study, it also has Tissue Doppler Imaging, Steer M Mode, and professional analysis tools like TEI Index, IMT, Automatic flow volume analysis and stress echo.





Premium Transducer Technology

- Super High-density Ultrasound Transducers Technology**
 Achieving Uniform Spatial and Contrast Resolution and Penetration in Both Near and Far Field.
- Full Range of Transducers**
 Convex, Phased, Linear, Transvaginal, Transrectal, Bi-plane, TEE, Endoscopic, Intraoperative, etc
- High Frequency Transducer Technology**
 The frequency of linear transducers can be up to 15MHz, and it's very important for the superficial diagnosis and some emerging medical application, like emergency, anesthesia, and ICU.
- Variable Frequency Technologies**
 Five broadband frequency ranges can support image with better resolution in the near field while better penetration in the far field
- Wide Angle View for Endocavity Transducers**
 Endocavity transducers can provide wide angle view up to 200 degree, in order to get large imaging area without moving probes
- Temperature Detection Technology**
 The temperature of transducers will display on the screen automatically, to make sure the diagnosis is safe for the patient



Comfortable and Efficient

SonoScape understands the importance of comfort and efficiency for radiologists, so SSI-8000 is designed for the purpose of being user-friendly for all the users with different preferences.

- 17 inch screen with an articulated arm
- Four universal transducer sockets compatible with full range probes
- Abundant connection interfaces: DICOM 3.0, USB port, VGA, S-video, and ECG, etc.
- Colored back-lit keyboard

