



SOLOSCAN P50

Wireless Ultrasound Scanner



160g

Light Weight

4 hr

Battery Life

6

Probe Types

Weight: 160g (.35 lbs)

Clinical Applications: ICU, Primary Care, EMS, Anesthesia
OB/GYN, Sports Medicine, Tele-Medicine, & More

Modes: B, BM, 2B, THI, Color, Power, PW

Size: 150mm*40mm*25mm

Efficient & Portable

The Soloscan P50 Ultrasound Scanner offers advanced technology and a **wide range of clinical applications** in a lightweight, portable, and **handheld design**.

The P50 is designed for the most demanding healthcare environments and features **built-in WiFi and USB connection**, enabling external display operation with computers, tablets, and smartphones. With the P50, ultrasounds can be done anytime, anywhere.

Features

- High-definition ultrasound images
- Lightweight, ergonomic handheld design
- WiFi & USB connection (Android/iOS/Windows Support)
- Detachable probe technology
- (Swap and connect different probes to the main device in seconds)
- 4 Hour continuous battery life
- Multiple language support
- Up to 10x max zoom
- Patient information management (DICOM 3.0 Support)



Dual Use Probe

Specially customized to scan both the abdomen and heart, the **Convex & Cardiac Probe** can be used for both routine abdominal exams and cardiac exams.



Convex & Cardiac Probe:
Abdominal and Cardiac
Model: C5-2Fs
Frequency: 3.5 MHZ
Bandwidth: 2-5 MHZ
Radius/ Footprint: R50

Probe Types



Transvaginal



Convex



Linear



Small Linear



Micro-Convex

Transvaginal Application:

Obstetrics/ Gynecology, Urology, IVF, and Pelvic

Model: E10-4Ks

Frequency: 6.5 MHZ

Bandwidth: 5-8.5 MHZ

Radius/ Footprint: R10

Convex Application:

Abdomen, OB/GYN, Urology, and Lung

Model: C5-2Ks

Frequency: 3.5 MHZ

Bandwidth: 2.5-5 MHZ

Radius/ Footprint: R60

Linear Application:

Vascular, Small Parts, Breast, MSK, Nerve, and Anesthesia

Model: L11-4Ks

Frequency: 7.5 MHZ

Bandwidth: 6-11 MHZ

Radius/ Footprint: L40

Small Linear Application:

Nerve, Anesthesia, Vascular, Small Parts, Breast, and MSK

Model: L11-4Gs

Frequency: 8 MHZ

Bandwidth: 6-11 MHZ

Radius/ Footprint: L25

Micro-Convex Application:

Neonatal Abdominal, Small Parts, and Neonatal Cardiac

Model: C8-5Ks

Frequency: 6.5 MHZ

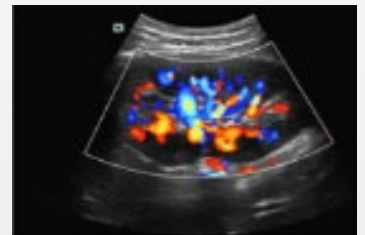
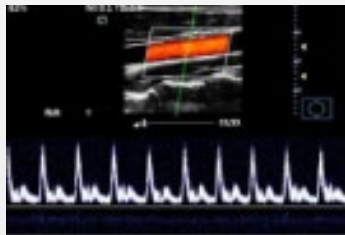
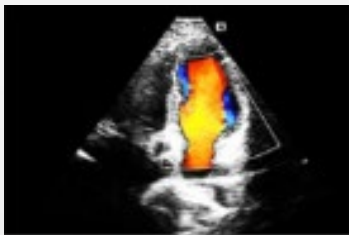
Bandwidth: 5-8 MHZ

Radius/ Footprint: R15

Wireless Ultrasound

WiFi & USB Connection

Supported on IOS, Android, and Windows
Capture ultrasounds anytime, anywhere.



Clinical Applications



ICU



Primary Care



EMS



Anesthesia



Tele-Medicine



Research



Teaching



OBGYN



Sports Medicine



Field Medicine